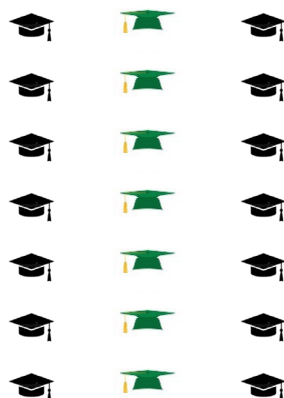


# East Georgia

STATE COLLEGE®

SWAINSBORO | STATESBORO | AUGUSTA | ONLINE



2024

## Fact Book



Office of Strategic Planning  
and Institutional Research

8/20/2024 Update

# East Georgia State College Fact Book 2024

## Table of Contents

### 1 **ABOUT THE COLLEGE**

- 2 East Georgia State College History
- 3 East Georgia State College Vision and Mission
- 3 East Georgia State College Accreditation
- 4 East Georgia State College Carnegie Classification
- 5 East Georgia State College Swainsboro Campus Map and Legend
- 6 East Georgia State College Service Area Map
- 7 East Georgia State College Economic Impact: Fiscal Years 2013-2022
- 8 East Georgia State College Goals and Strategies

### 9 **ADMINISTRATION**

- 10 University System of Georgia Board of Regents 2024
- 11 University System of Georgia Administrative Staff 2024
- 12 East Georgia State College Organization Chart 2024
- 13 East Georgia State College Organization Chart: Academic Affairs
- 14 East Georgia State College Organization Chart: Student Affairs
- 15 East Georgia State College Organization Chart: Enrollment Management
- 16 East Georgia State College Organization Chart: Augusta
- 17 East Georgia State College Organization Chart: Statesboro
- 18 East Georgia State College Organization Chart: Business Affairs
- 19 East Georgia State College Organization Chart: Information Technology
- 20 East Georgia State College Organization Chart: Institutional Advancement
- 21 East Georgia State College Organization Chart: Athletic Department
- 22 East Georgia State College Organization Chart: Police Department
- 23 East Georgia State College Cabinet: Spring 2024
- 24 The East Georgia State College Foundation: 2023-24 Trustees

### 25 **ADMISSIONS**

- 26 Applied, Accepted and Registered Fall Semester 2014-2023
- 26 Beginning Freshmen: Fall Semester 2014-2023
- 26 Mean Scholastic Aptitude Test (Old SAT) Scores for Beginning Freshmen: Fall Terms 2012-2021
- 26 Mean Scholastic Aptitude Test (New SAT) Scores for Beginning Freshmen: Fall Terms 2016-2023
- 27 Georgia High Schools of Beginning Freshmen: Fall 2023

### 28 **STUDENT FINANCIAL INFORMATION**

- 29 Semester Tuition and Fees Fall 2023 – Spring 2024
- 30 EGSC SACSCOC and IPEDS Peer Colleges
- 31 EGSC and IPEDS Peer College Comparisons:
  - 31 • Academic Year Tuition and Fees for Full-Time, First Time Undergraduates FY 2020 - FY 2023
  - 31 • Academic Year Average Net Price of Attendance for Full-Time, First Time Undergraduates FY 2020 - FY 2022
  - 32 • Percent of Full-Time, First-Time Students Awarded Aid FY 2022
  - 32 • Average Amount Awarded of Full-Time, First-Time Students Awarded Aid FY 2022

# East Georgia State College Fact Book 2024

## Table of Contents

<u>33</u>	<b>ACADEMIC INFORMATION</b>
<u>34</u>	Associate and Baccalaureate Degree List
<u>35</u>	Degrees Conferred FY 2012-14 through FY 2022-23
<u>36</u>	Degrees Conferred by Academic Program FY 2018 through FY 2023
<u>37</u>	Three-Year Completion Rates for Fall Semester First-Time Full-Time Associate Degrees: Entering Cohorts 2011-2020
<u>38</u>	Distribution of Grades by Class: Academic Year 2022-23
<u>38</u>	Participation in Education Abroad at the East Georgia State College: Academic Years 2009-10 through 2018-19
<u>38</u>	Library Resources FY 2021-22
<u>38</u>	Library Visitors FY 2018-19 – FY 2022-23
<u>39</u>	Credits Hours Earned to Attempted by Semester and Course Delivery Mode Summer 2012 – Spring 2023
<u>40</u>	<b>ENROLLMENT</b>
<u>41</u>	Enrollment Counts by Class Level: Fall Semester 2014-2023
<u>41</u>	Enrollment Percentages by Class Level: Fall Semester 2014-2023
<u>41</u>	Enrollment Chart by Class Level: Fall Semester 2014-2023
<u>42</u>	Enrollment Counts by Location and Mode of Delivery: Fall Semester 2014-2023
<u>42</u>	Enrollment Percentages by Location/Delivery Mode: Fall Semester 2014-2023
<u>42</u>	Enrollment Chart by Location and Mode of Delivery: Fall Semester 2014-2023
<u>43</u>	Fall Semester 2023 Counts of Gender and Ethnicity by Class Level
<u>43</u>	Fall Semester 2023 Percentages of Gender and Ethnicity by Class Level
<u>44</u>	Fall Semester 2023 Counts of Gender and Ethnicity by Location/Mode of Delivery
<u>44</u>	Fall Semester 2023 Percentage of Gender and Ethnicity by Location/Mode of Delivery
<u>45</u>	Fall Semester 2023 Enrolled Georgians by County of Residence
<u>46</u>	Fall Semester 2023 Percentages of Student Load by Class Level
<u>46</u>	Fall Semester 2023 Number of Veteran/Military Students
<u>46</u>	Retention Rates for Fall Semester First-Time Full-Time Undergraduates: Entering Cohorts 2013-2022
<u>47</u>	<b>STUDENT RELATED INFORMATION</b>
<u>48</u>	East Georgia State College – Swainsboro Crime Statistics Calendar Years 2020, 2021, and 2022
<u>49</u>	East Georgia State College Graduate Alumni by State of Residence through Fall 2021
<u>49</u>	East Georgia State College Graduate Alumni by Georgia County of Residence through Fall 2021
<u>50</u>	<b>FACULTY AND STAFF</b>
<u>51</u>	Full-Time Faculty by Teaching Assignment Location Spring Semester 2024
<u>52</u>	Full-Time Professorial Faculty by Rank and Ethnicity: Fall 2023
<u>52</u>	Average Academic Year Salaries of Instructional Faculty, EGSC and Selected Peers: Academic Year 2023
<u>52</u>	Average Academic Year Salaries Chart of Instructional Faculty, EGSC & Selected Peers: Academic Year 2023
<u>53</u>	College Full-Time Employees by Occupational Classification, Gender and Ethnicity: November 1, 2023
<u>54</u>	<b>FINANCIAL INFORMATION</b>
<u>55</u>	Revenue by Source: Fiscal Years 2018 through 2022
<u>56</u>	Expenditures by Function: Fiscal Years 2018 through 2022
<u>57</u>	EGSC Foundation Fundraising: Fiscal Years 1999 through 2023
<u>58</u>	<b>PHYSICAL FACILITIES</b>
<u>59</u>	College Buildings by Major Use, Swainsboro Campus: Spring 2024
<u>59</u>	Number of Rooms by Basic Room Type, Swainsboro Campus: Spring 2024
<u>59</u>	Space Assignment by Room Use and Building Location: Spring 2024
<u>59</u>	East Georgia State College Land Holdings

# ABOUT THE COLLEGE

### History of East Georgia State College

As early as 1956, community leaders in Emanuel County and Swainsboro urged the state to establish a two-year college in the area. Committees were formed in 1956 and in 1965, and lobbying efforts at the state level were undertaken, but without immediate results. In December 1969, the Board of Regents of the University System of Georgia authorized a study to determine the need for additional two-year colleges in the state. A year later, six possible sites, including the Swainsboro–Emanuel County area, were approved with the stipulation that the county of each prospective site provide the land or property for a campus site, as well as the funds for constructing and furnishing the initial physical plant.

In September 1971, the citizens of Emanuel County voted for a bond issue of \$2.1 million to underwrite the cost of a new college. The Emanuel County Board of Education, representing the citizens of the county and working with the local college committee, also provided a wooded site of 207 acres (190 acres of which were donated by Luck Flanders Gambrell) within the city limits of Swainsboro. In December 1971, the Board of Regents gave final approval for the campus site and named the new college Emanuel County Junior College (ECJC).

ECJC opened in Fall Quarter 1973. In 1987 the University System of Georgia mandated that the term “junior” be deleted from the names of its two-year institutions, and in 1988 Emanuel County Junior College became East Georgia College. The \$2.1 million bond issue was also paid off in 1988.

In 2012, after being granted state college status, the College’s name was again changed to East Georgia State College (EGSC) to reflect a new mission of providing a limited number of baccalaureate degrees targeted to meet the needs of the College’s service area. In addition to a Bachelor of Science in Biology, beginning in Fall Semester 2012, the ECSC launched an online Bachelor of Art in Fire and Emergency Services Administration in Spring Semester 2016 and an online Bachelor of Science RN to BSN Bridge Nursing Completion Program in Fall Semester 2017. Both of these online degree programs were designed to meet the needs of working professionals who seek to advance their careers.

Because of the decline in enrollment caused by the COVID-19 pandemic, a study group was formed consisting of EGSC and USG academic staff during Spring Semester 2021 to review the viability of the College’s academic programs. Given the decline in EGSC’s enrollment, one certificate program, thirteen associate degree programs, and three baccalaureate degree programs were determined to be unsustainable. Beginning in Fall Semester 2021, meta-majors at the associate degree level were created for the social sciences and the natural sciences to provide efficient pathways for students completing an associate degree at EGSC to go on to complete a baccalaureate degree at another USG institution with seamless transferability of credit hours earned. In addition, EGSC was approved to begin offering its students two online eMajor degrees in cooperation with USG eCampus.

Through the years, East Georgia State College has proudly maintained its original strategic purpose as an access institution with strong community ties and continues, today, to adhere to its original mission by providing accessibility to a wide range of credit and non-credit academic programs in an atmosphere contributing to the intellectual and cultural growth of our students.

Many in East Georgia State College’s diverse student population are first generation and non-traditional college students who have been raised in economically depressed conditions within rural east-central Georgia. By tailoring our academic programs to meet the challenging developmental needs through learning support while also maintaining affordable tuition, East Georgia State College has been successful in increasing the educational levels of the communities it serves. In 2023, EGSC celebrated its 50<sup>th</sup> anniversary and looks forward to its next 50 years of service to Southeast Georgia!

### Vision and Mission of East Georgia State College

Presented below are East Georgia State College's (EGSC's) vision and mission statements. EGSC's vision statement provides the long-term context for pursuing a mission that focuses on extending the College's associate of arts degree options to multiple student populations and developing baccalaureate degrees targeted to the needs of its service area.

#### **Vision Statement**

Through bold and transformative action, East Georgia State College aspires to significantly increase the educational achievement of its students and to be an indispensable pathway to a more fulfilling and prosperous future.

#### **Mission Statement**

East Georgia State College is an associate degree granting, liberal arts institution of the University System of Georgia providing its students access to both academically transferable programs of study and collaborative programs in occupation related fields. The College also offers targeted baccalaureate level degrees that support the University System's initiative to expand educational opportunities. The College prepares traditional and nontraditional students for success in the global 21<sup>st</sup> century through a technologically advanced teaching and learning environment that fosters personal growth by utilizing an expanding range of resources and amenities, including an on-campus student residential option. The College also continuously engages the communities it serves through public service and cultural enrichment.

### **Accreditation of East Georgia State College**

East Georgia State College is accredited by the Southern Association of Colleges and Schools Commission on Colleges to award certificates, associate degrees and baccalaureate degrees. Questions about the accreditation of East Georgia State College may be directed in writing to the Southern Association of Colleges and Schools Commission on Colleges at 1866 Southern Lane, Decatur, GA 30033-4097, by calling (404) 679-4500, or by using information available on SACSCOC's website ([www.sacscoc.org](http://www.sacscoc.org)).

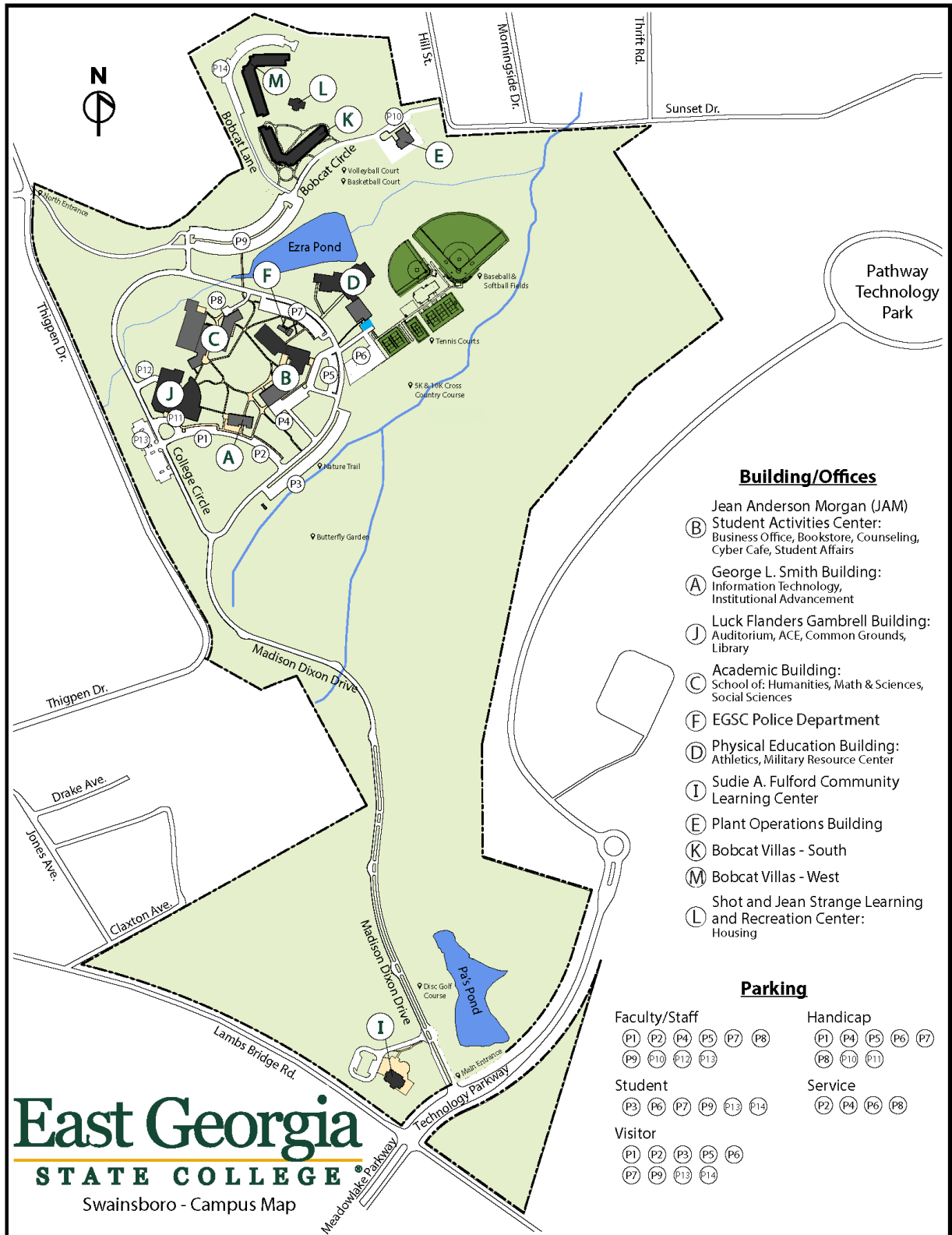


**EGSC Carnegie Classification** (Source: <http://carnegieclassifications.iu.edu/>)

Classification	Category (Classification Definitions)
Basic	<u>Baccalaureate/Associate's Colleges</u> : Includes four-year colleges (by virtue of having at least one baccalaureate degree program) that conferred more than 50 percent of degrees at the associate's level. Excludes Special Focus Institutions, Tribal Colleges, and institutions that have sufficient master's or doctoral degrees to fall into those categories. The formal expression of these classifications is (Classification) Subset. <b>Baccalaureate/Associate's Colleges: Associate's Dominant.</b>
Undergraduate Instructional Program	<u>Baccalaureate/Associate's Colleges</u> : These institutions awarded both associate's and bachelor's degrees, but the majority of degrees awarded were at the associate's level.
Graduate Instructional Program	(Not Classified)
Enrollment Profile	<u>Exclusively undergraduate four-year</u> : Fall enrollment data show only undergraduates enrolled at these bachelor's or higher degree granting institutions.
Undergraduate Profile	<u>Full-time, inclusive, lower transfer-in</u> : Fall enrollment data indicate at least 80 percent of undergraduates are enrolled full-time at these bachelor's or higher degree granting institutions. These institutions either did not report test score data or the scores indicate that they extend educational opportunity to a wide range of students with respect to academic preparation and achievement. Fewer than 20 percent of entering undergraduates are transfer students.
Size and Setting	<u>Four-year, small, primarily nonresidential</u> : Fall enrollment data indicate FTE* enrollment of 1,000–2,999 degree-seeking students at these bachelor's or higher degree granting institutions. Fewer than 25 % of degree-seeking undergraduates live on campus** and/or fewer than 50 % attend full time (includes exclusively distance education institutions).

\*FTE: Full-time equivalent enrollment was calculated as full-time plus one-third part-time.  
 \*\*On campus is defined as institutionally owned, controlled, or affiliated housing.

**East Georgia State College Swainsboro Campus Map and Legend**



**Building/Offices**

- (JAM) Jean Anderson Morgan (JAM)
- (B) Student Activities Center: Business Office, Bookstore, Counseling, Cyber Cafe, Student Affairs
- (A) George L. Smith Building: Information Technology, Institutional Advancement
- (J) Luck Flanders Gambrell Building: Auditorium, ACE, Common Grounds, Library
- (C) Academic Building: School of: Humanities, Math & Sciences, Social Sciences
- (F) EGSC Police Department
- (D) Physical Education Building: Athletics, Military Resource Center
- (I) Sudie A. Fulford Community Learning Center
- (E) Plant Operations Building
- (K) Bobcat Villas - South
- (M) Bobcat Villas - West
- (L) Shot and Jean Strange Learning and Recreation Center: Housing

**Parking**

- |                                 |                          |
|---------------------------------|--------------------------|
| <b>Faculty/Staff</b>            | <b>Handicap</b>          |
| (P1) (P2) (P4) (P5) (P7) (P8)   | (P1) (P4) (P5) (P6) (P7) |
| (P9) (P10) (P12) (P13)          | (P8) (P10) (P11)         |
| <b>Student</b>                  | <b>Service</b>           |
| (P3) (P6) (P7) (P9) (P13) (P14) | (P2) (P4) (P6) (P8)      |
| <b>Visitor</b>                  |                          |
| (P1) (P2) (P3) (P5) (P6)        |                          |
| (P7) (P9) (P13) (P14)           |                          |

**East Georgia**  
**STATE COLLEGE**  
 Swainsboro - Campus Map

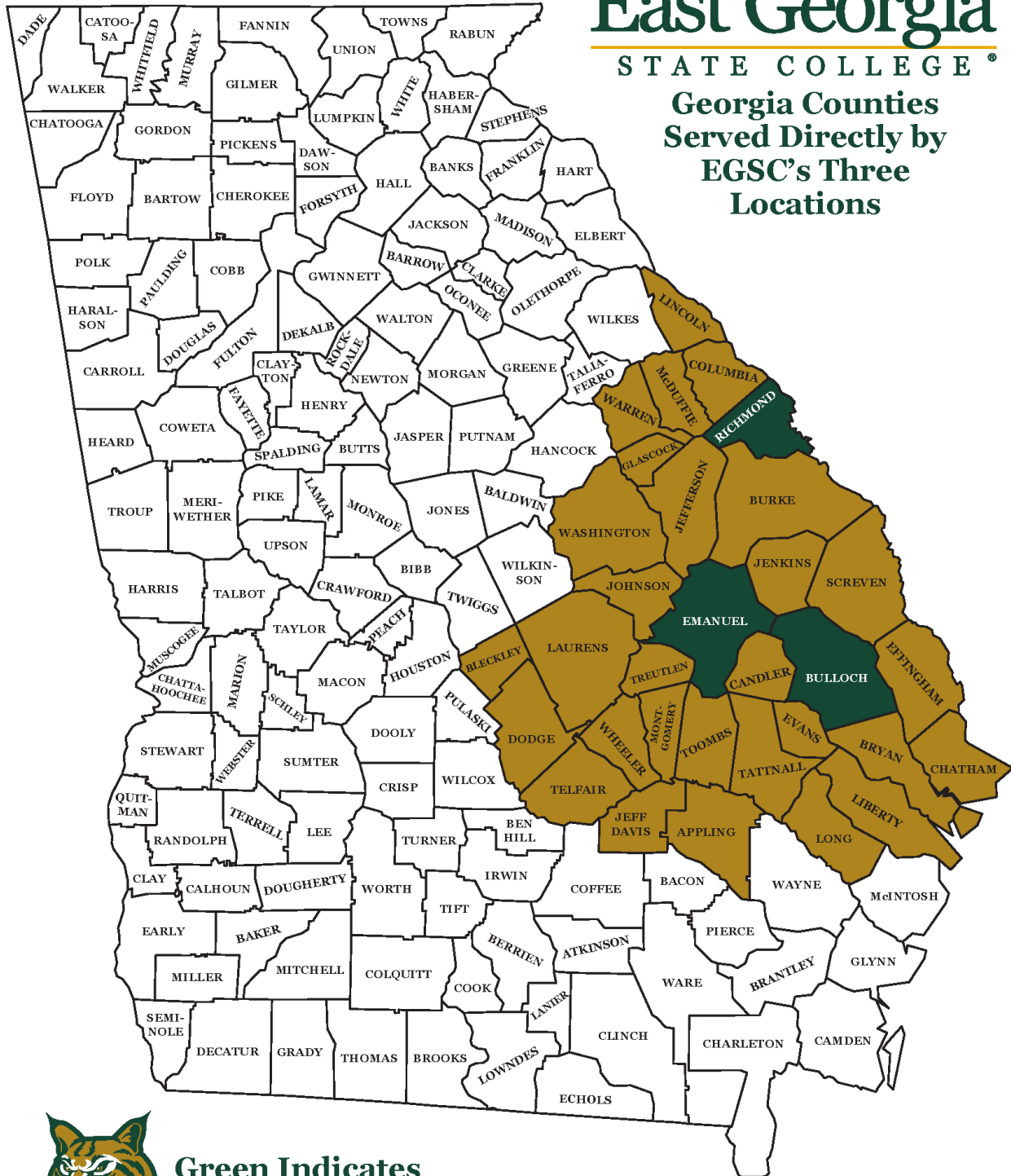


East Georgia State College Service Area Map

# East Georgia

STATE COLLEGE®

Georgia Counties Served Directly by EGSC's Three Locations



Green Indicates EGSC Location

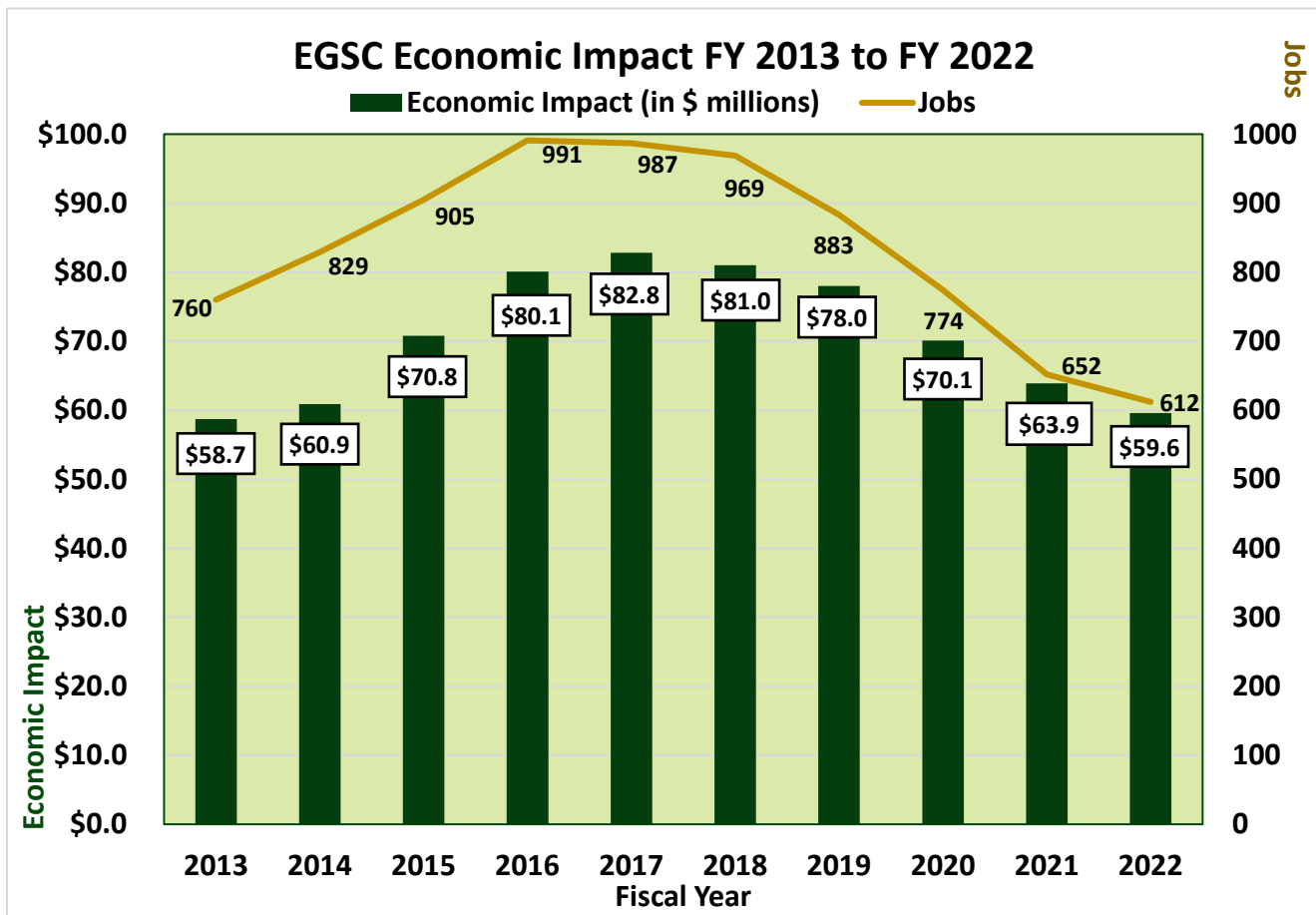
as of 03/07/22

**East Georgia State College Economic Impact: Fiscal Years 2013-2022**

Source: Selig Center for Economic Growth  
Terry College of Business  
The University of Georgia

Year	Output Impact	Jobs
FY 2022	\$59,599,717	612
FY 2021	\$63,927,337	652
FY 2020	\$70,056,633	774
FY 2019	\$77,977,155	883
FY 2018	\$80,952,494	969
FY 2017	\$82,831,552	987
FY 2016	\$80,140,200	991
FY 2015	\$70,849,180	905
FY 2014	\$60,856,225	829
FY 2013	\$58,679,138	760

Service area as defined by Selig Center: Emanuel, Candler, Bulloch, Johnson, Jefferson, Toombs, Treutlen, and Jenkins



**The East Georgia State College Goals and Strategies**

As a unit of the University System of Georgia (USG), EGSC bases its institutional goals on the USG vision statement and system goals. Presented below is the vision statement of the *USG Strategic Plan 2029*.

**USG Vision Statement**

The University System of Georgia is determined to be recognized as the best system of higher education in the United States as it advances the prosperity of individuals, the state of Georgia, and the nation through education, research, engagement, and innovation.

Consistent with its role as an access institution within the USG, EGSC’s four institutional goals are presented below.

1. **Student Success:** East Georgia State College provides access to innovative academic programs and engages in college completion initiatives, transforming students and equipping them with tools for success.
2. **Responsible Stewardship:** East Georgia State College uses innovative cost control measures to deliver high quality, affordable degree programs.
3. **Community Impact:** East Georgia State College provides a rich array of public service programs through its Sudie A. Fulford Community Center to the communities it serves.
4. **Economic Competitiveness:** East Georgia State College is a catalyst for economic development through a variety of initiatives and degree programs that nurture effective student leaders equipped to transform communities in innovative ways.

**USG Goal/EGSC Institutional Goal Alignment and Strategies**

USG/EGSC Goals	Strategy No.	Strategy Description
Goal 1: Student Success	Strategy 1.1	Improve student success in core curriculum courses through focused initiatives
	Strategy 1.2	Increase degrees conferred
	Strategy 1.3	Increase enrollment and retention
Goal 2: Responsible Stewardship	Strategy 2.1	Leverage resources to improve student services and outcomes
Goal 3: Economic Competitiveness	Strategy 3.1	Become the primary resource for employee development and advancement in the local economy
Goal 4: Community Impact	Strategy 4.1	Collaborate with community on growth initiatives

Source: EGSC Office of Strategic Planning and Institutional Research

# ADMINISTRATION

University System of Georgia Board of Regents

Regent	Residence	Congressional District	Term of Office
Harold Reynolds (BOR Chair)	Greensboro	Tenth	2020-2027
T. Dallas Smith (BOR Vice Chair)	Atlanta	State-at-Large	2020-2027
Erin Hames	Atlanta	State-at-Large	2023-2030
Samuel D. Holmes	Atlanta	State-at-Large	2019-2026
James M. Hull	Augusta	State-at-Large	2023-2030
Neil L. Pruitt, Jr	Norcross	State-at-Large	2022-2027
Patrick C. Jones	Waycross	First	2022-2025
Bàrbara Rivera Holmes	Albany	Second	2018-2025
Mat Swift	Columbus	Third	2024-2031
Cade Joiner	Loganville	Fourth	2022-2026
Sarah-Elizabeth Langford Reed	Atlanta	Fifth	2017-2024
Richard “Tim” Evans	Alpharetta	Sixth	2022-2029
Jose R Perez	Peachtree Corners	Seventh	2019-2026
W. Allen Gudenrath	Macon	Eighth	2018-2025
Jim Syfan	Gainesville	Ninth	2022-2029
Tom Bradbury	Vinings	Eleventh	2022-2024
Everett Kennedy III	Statesboro	Twelfth	2020-2027
Doug Aldridge	Atlanta	Thirteenth	2022-2028
Lowery Houston May	Rome	Fourteenth	2020-2027

Source: University System of Georgia Board of Regents

University System of Georgia Administrative Staff 2023

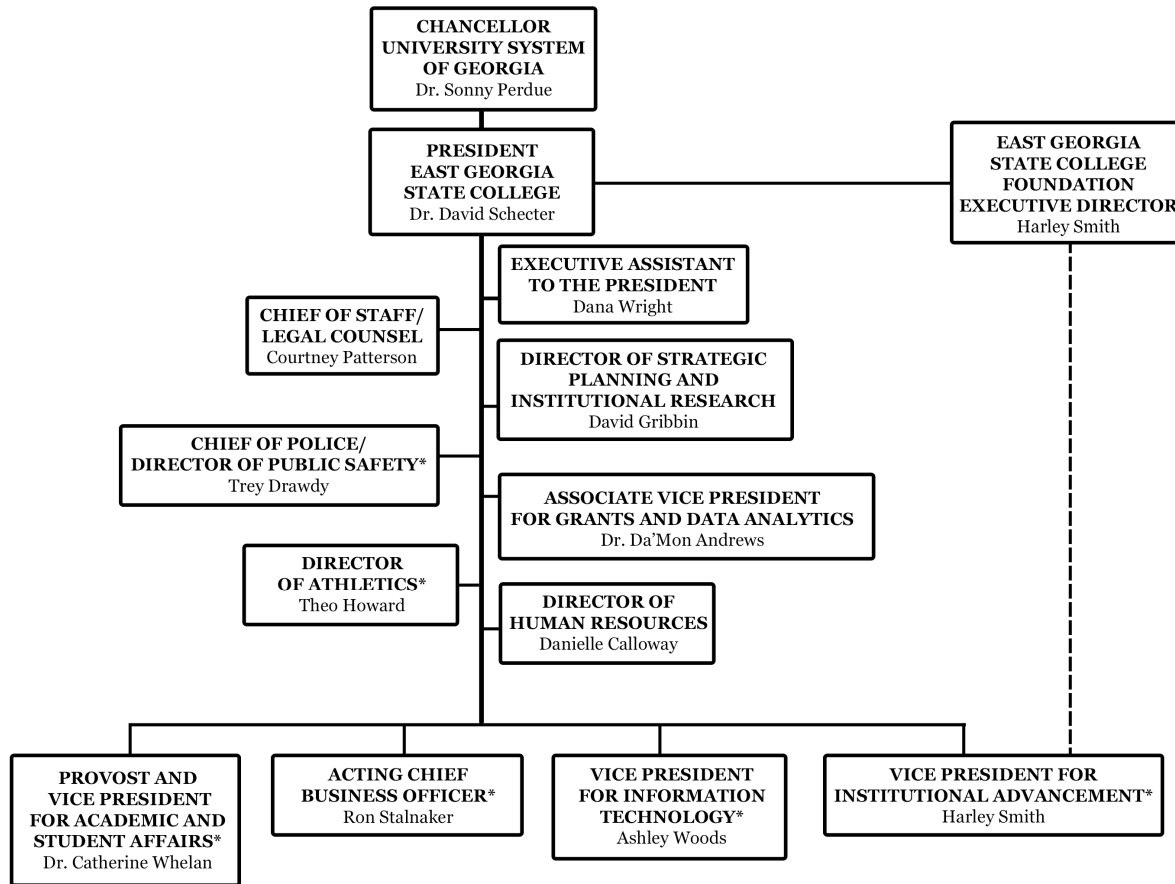
Position	Staff Member
Chancellor	Sonny Perdue
Chief Operating Officer	Teresa McCartney
Chief of Staff & Vice Chancellor for External Affairs	Ashley Jones May
Executive Vice Chancellor for Academic Affairs & Chief Academic Officer	Ashwani Monga
Chief Fiscal Officer	Tracey Cook
Vice Chancellor – Academic Affairs	Dana Nichols
Vice Chancellor – Information Technology Services & Chief Information Officer	Timothy M. Chester
Vice Chancellor – Enrollment Management & Student Affairs	Scot Lingrell
Vice Chancellor – Student and Faculty Success	Felita Williams
Vice Chancellor – Fiscal Affairs	Jeff Davis
Interim Vice Chancellor – Human Resources	Karin Elliott
Vice Chancellor – Internal Audit and Chief Audit Officer	Jenna Wiese
Vice Chancellor – Leadership & Institutional Development	Stuart Rayfield
Vice Chancellor – Legal Affairs	Christopher McGraw
Vice Chancellor – Real Estate & Facilities	Sandra L. Neuse
Vice Chancellor – Research & Policy Analysis	Angela Bell
Interim Vice Chancellor – Development	Kirby Thompson
Associate Vice Chancellor – Faculty Development	Jeffery Galle
Associate Vice Chancellor – Leadership and Institutional Development	Wendi Jenkins
Associate Vice Chancellor – Student and Faculty Success	Jonathan Hull
Associate Vice Chancellor – Strategic Implementation	Rich Loftus
Associate Vice Chancellor – Distance Learning & Innovation	Jon Sizemore
Associate Vice Chancellor – Strategic Academic Initiates	Felita Williams
Assistant Vice Chancellor – Academic Library Services & Executive Director for GALILEO	Lucy Harrison
Chief Information Security Officer	Alfred Barker
Chief of Police & Director of Safety & Security	Mike Coverson
Interim Director of Economic Development	Chris Kidd
Executive Director of Georgia Film Academy	Scott Votaw
State Librarian, Georgia Public Library Service	Julie Walker
Director of Georgia Archives	Christopher Davidson

Source: University System of Georgia Board of Regents



East Georgia State College Organization Charts

## East Georgia State College Organizational Chart



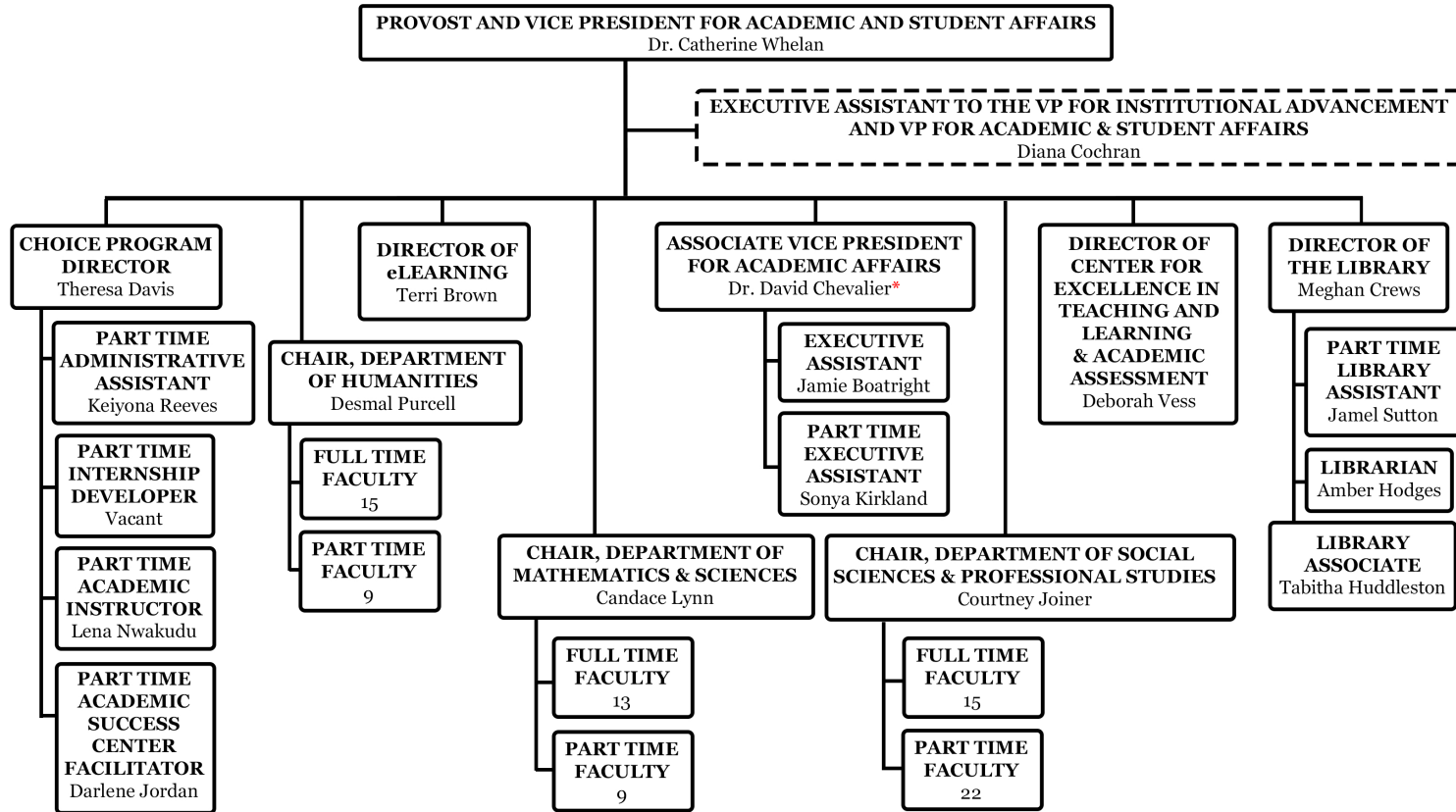
Approved by President’s Cabinet August 7, 2024

\*See separate organization chart for each of the above units

Source: Office of the President

East Georgia State College Organization Charts

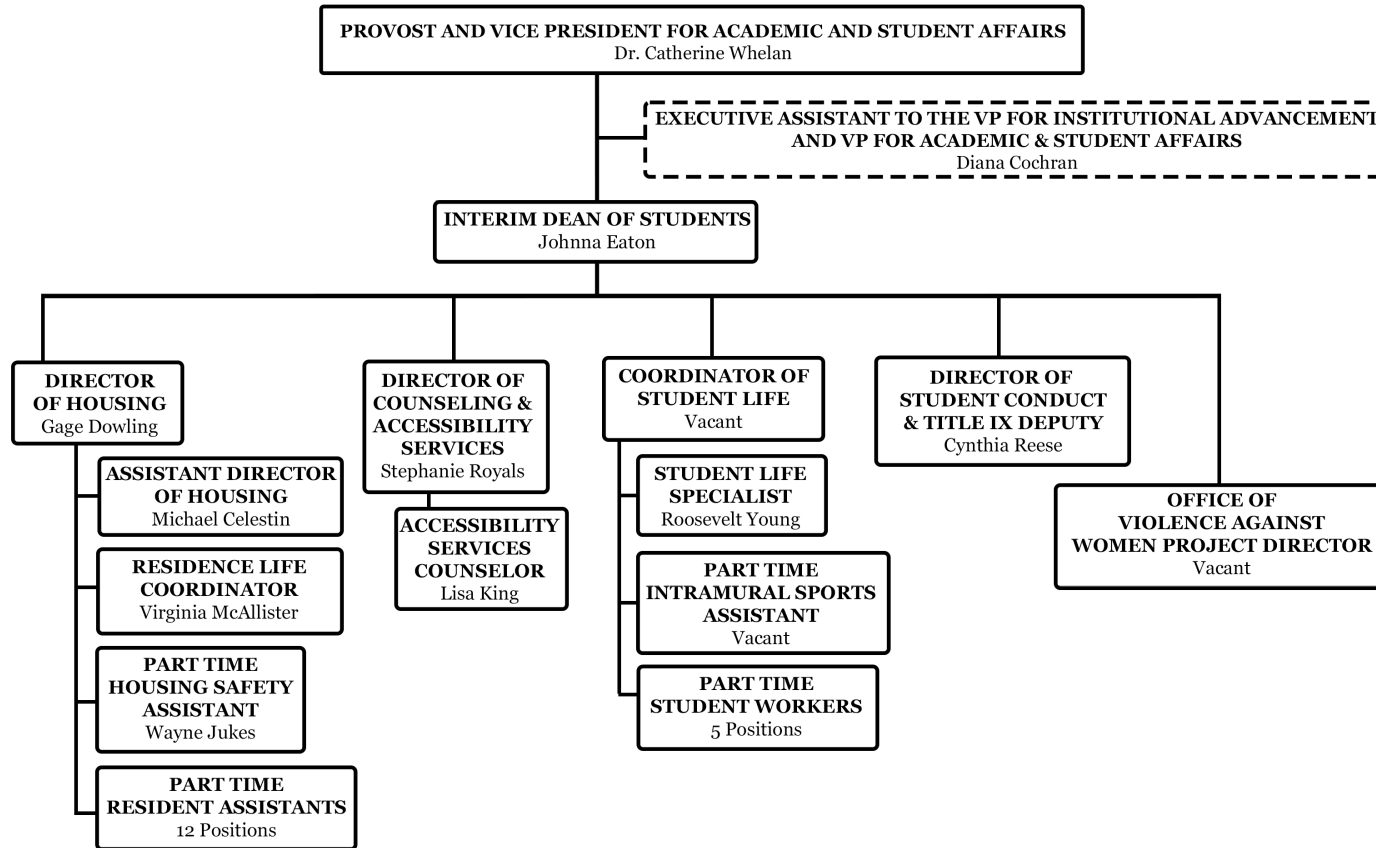
## East Georgia State College - Academic Affairs Organizational Chart



Approved by President's Cabinet August 7, 2024

East Georgia State College Organization Charts

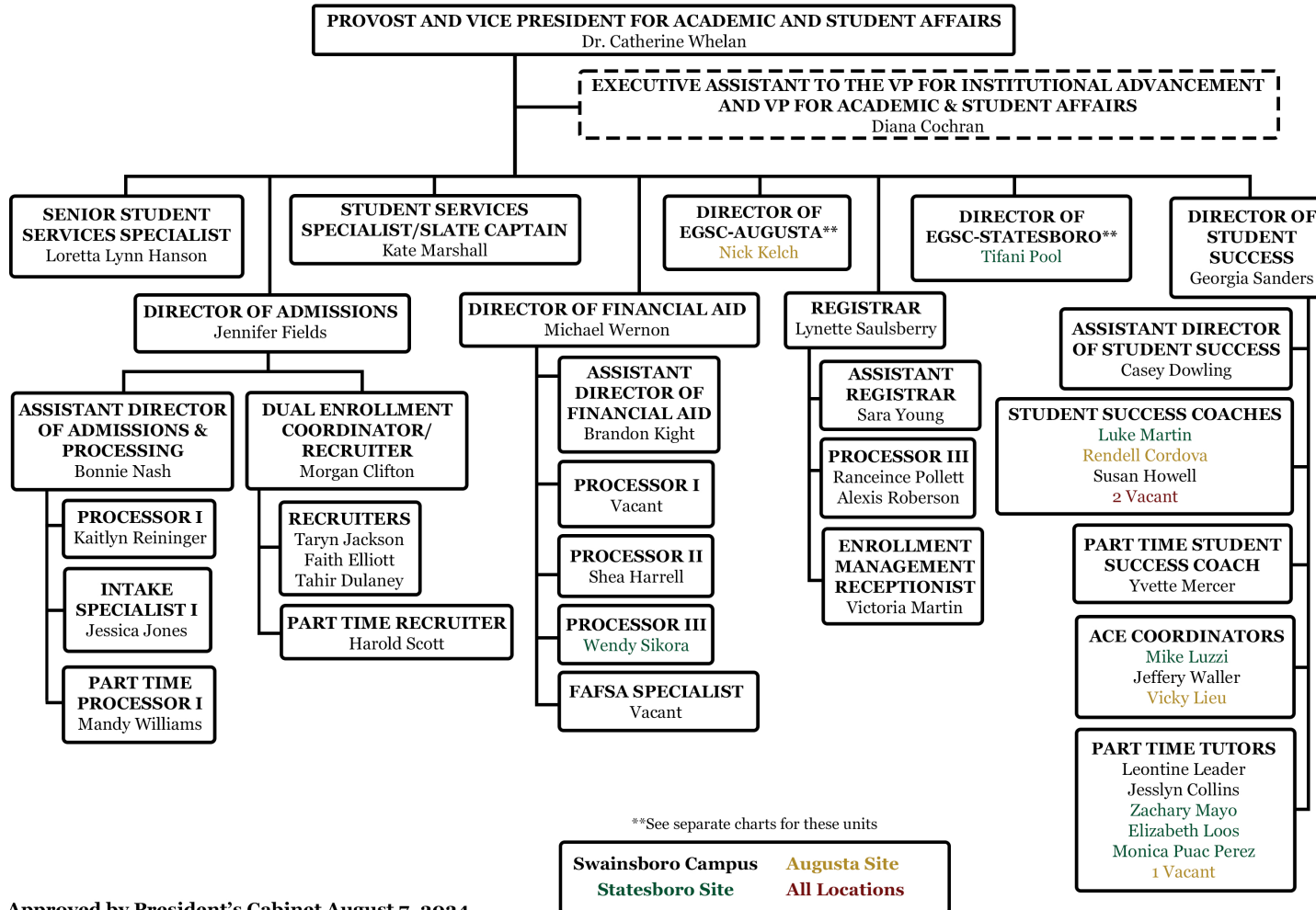
## East Georgia State College - Student Affairs Organizational Chart



Approved by President's Cabinet August 7, 2024

East Georgia State College Organization Charts

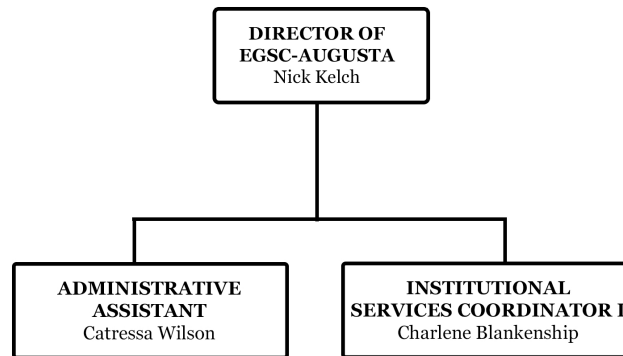
## East Georgia State College - Enrollment Management Organizational Chart



Approved by President's Cabinet August 7, 2024

East Georgia State College Organization Charts

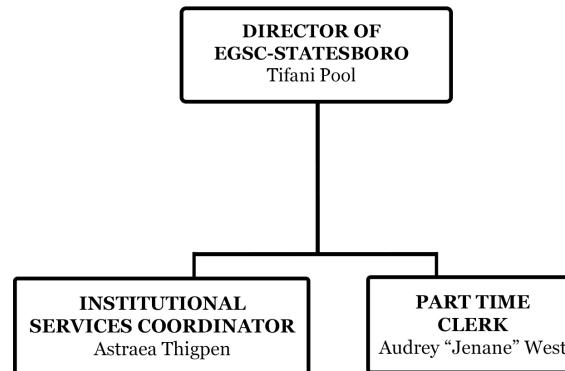
## East Georgia State College - Augusta Organizational Chart



Approved by President's Cabinet August 7, 2024

East Georgia State College Organization Charts

## East Georgia State College - Statesboro Organizational Chart

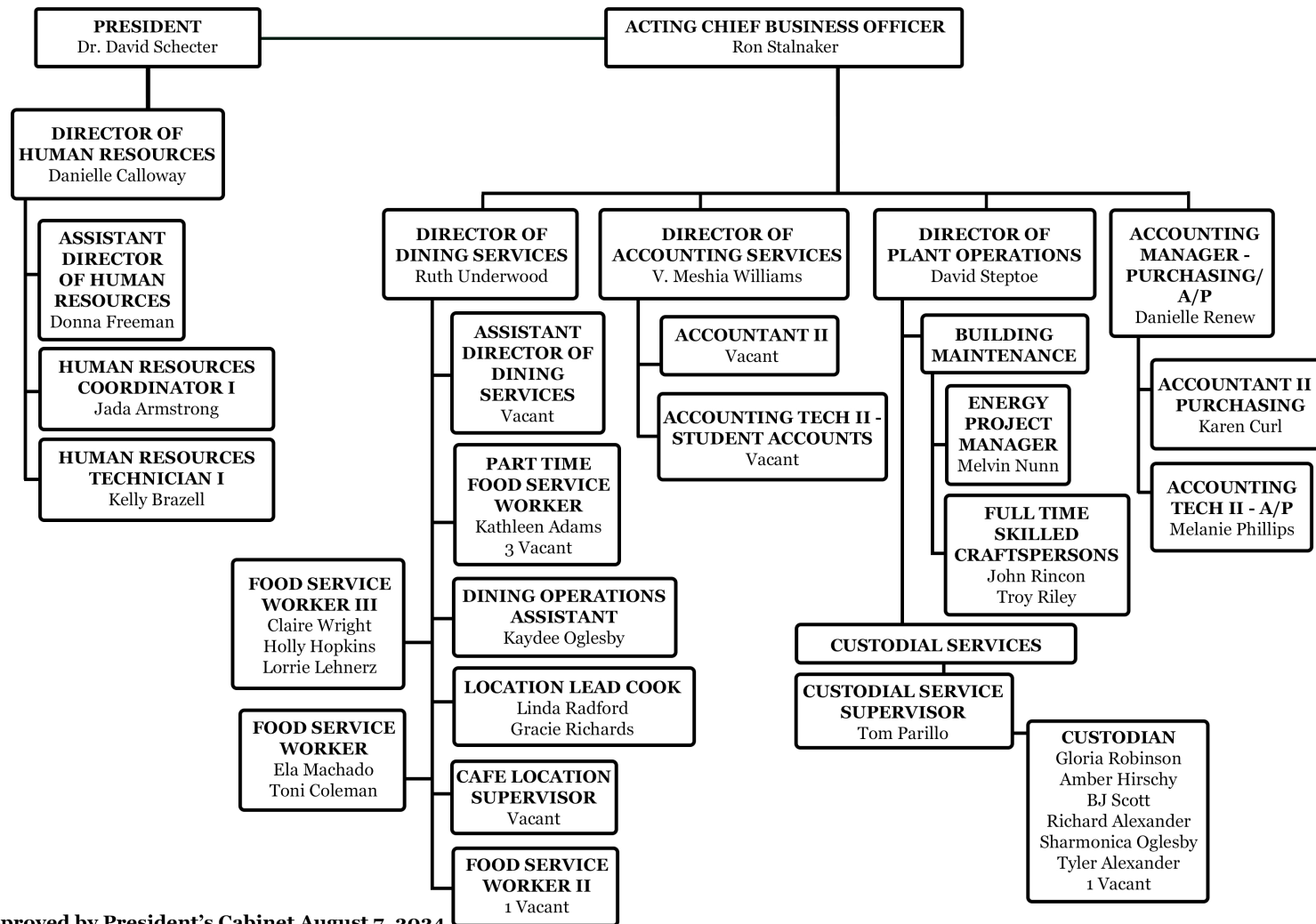


Approved by President's Cabinet August 7, 2024



East Georgia State College Organization Charts

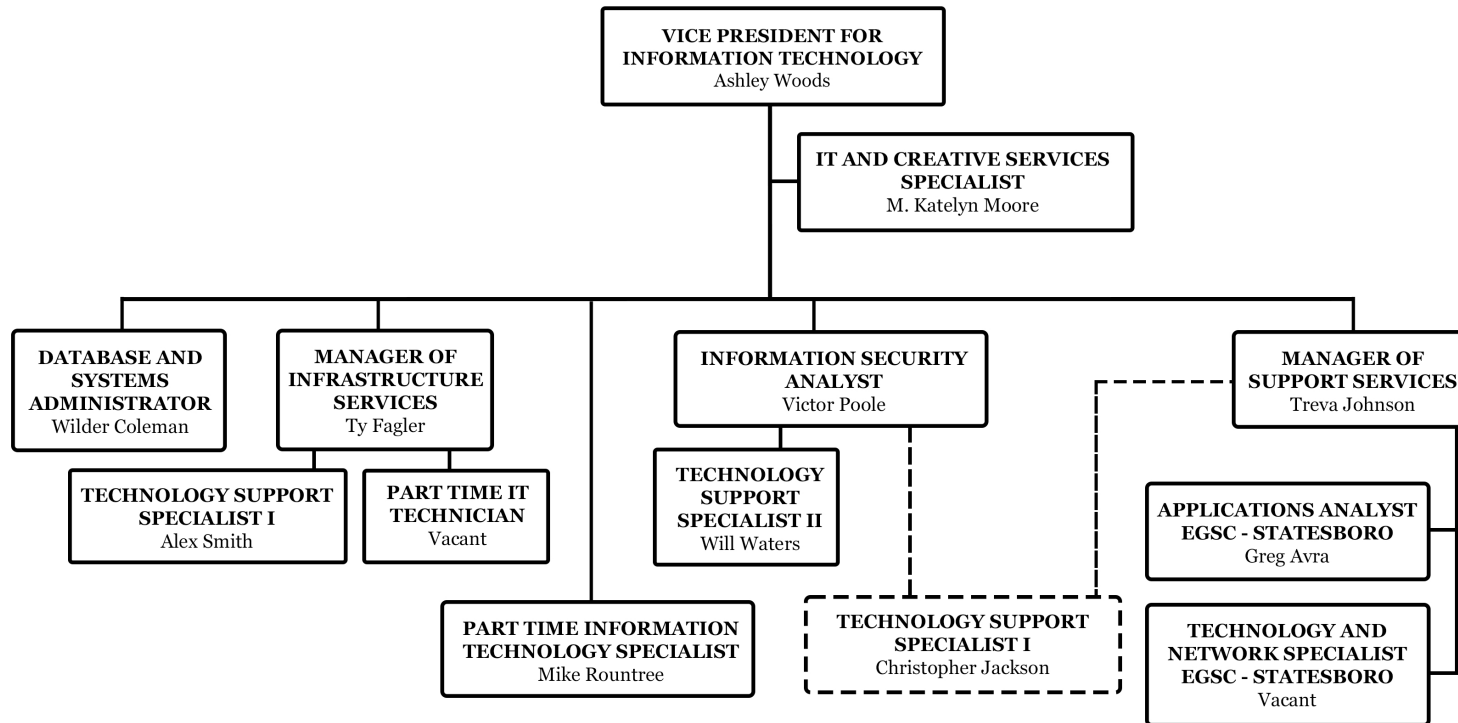
## East Georgia State College - Business Affairs Organizational Chart



Approved by President's Cabinet August 7, 2024

East Georgia State College Organization Charts

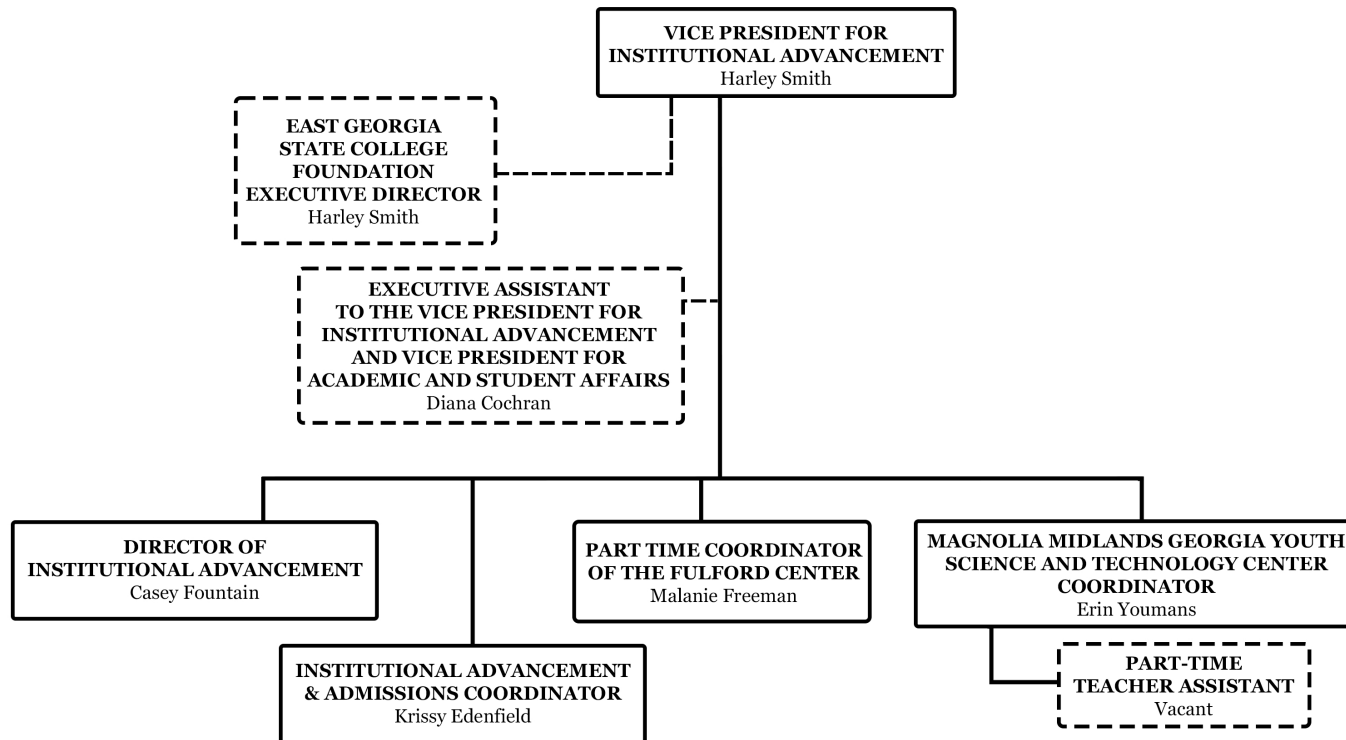
## East Georgia State College - Information Technology Organizational Chart



Approved by President's Cabinet August 7, 2024

East Georgia State College Organization Charts

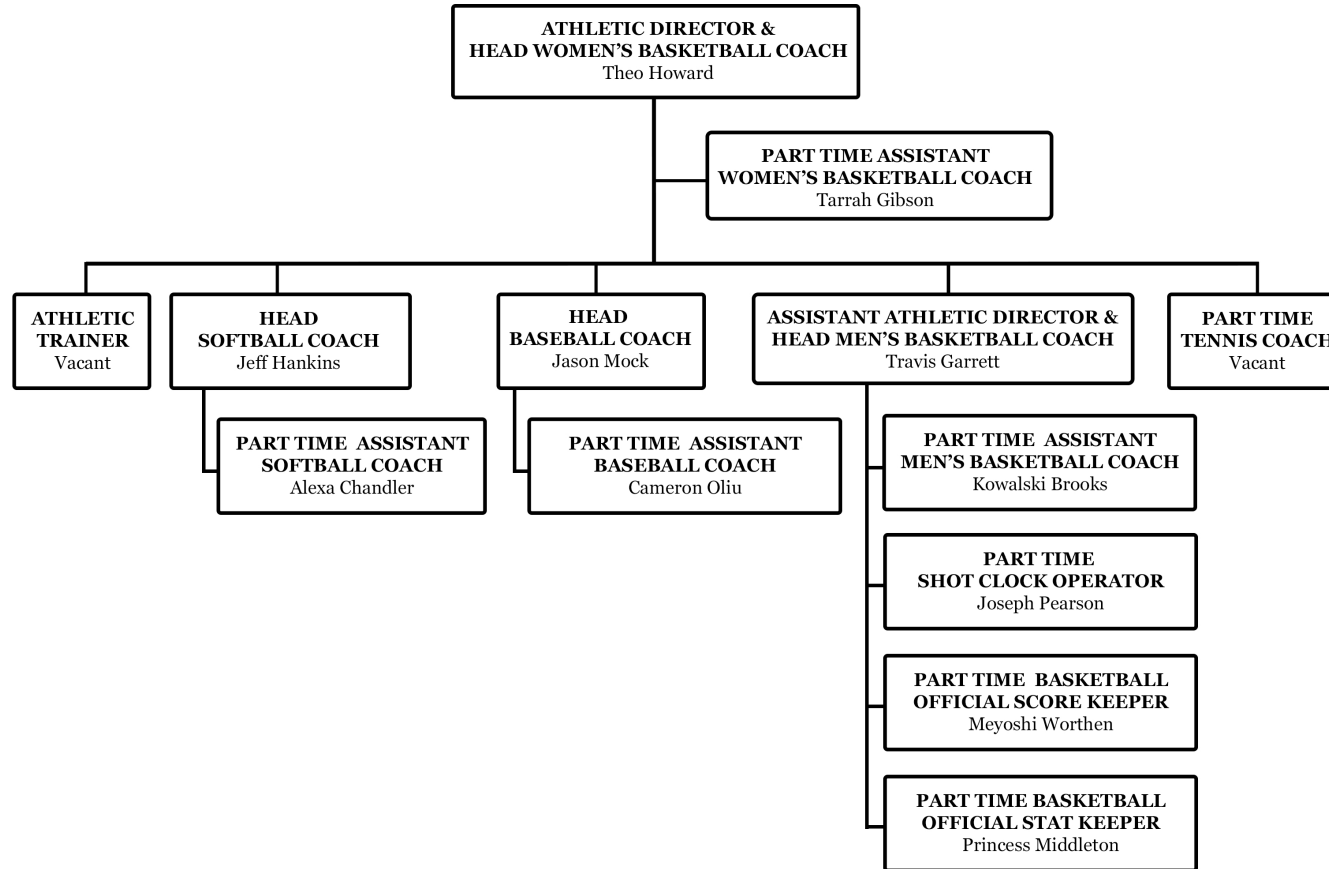
## East Georgia State College - Institutional Advancement Organizational Chart



Approved by President's Cabinet August 7, 2024

East Georgia State College Organization Charts

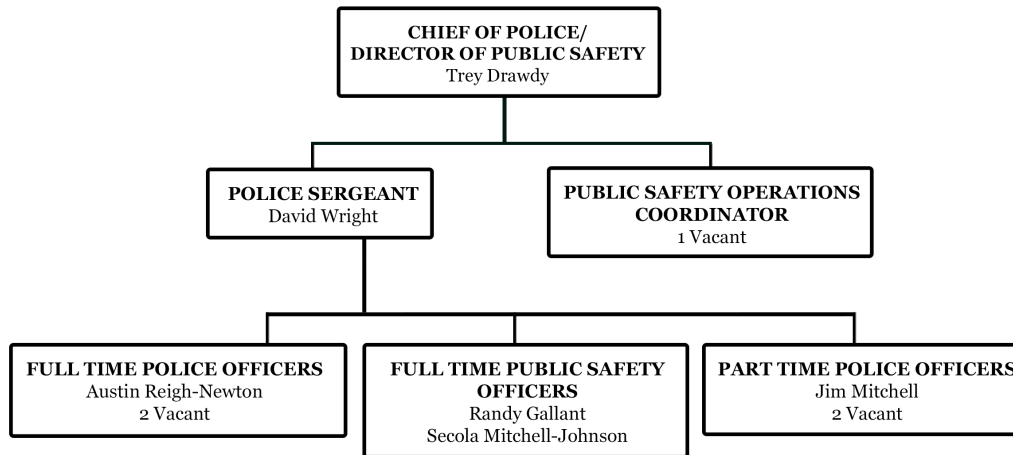
## East Georgia State College - Athletic Department Organizational Chart



Approved by President's Cabinet August 7, 2024

East Georgia State College Organization Charts

## East Georgia State College - Police Department Organizational Chart



Approved by President's Cabinet August 7, 2024

**East Georgia State College Cabinet:**

David Schechter	President of the College
Da'Mon Andrews	Associate Vice President for Grants and Data Analytics
Danielle Calloway	Director of Human Resources
Trey Drawdy	Chief of Police and Director of Public Safety
David Gribbin	Director of Strategic Planning and Institutional Research
Theo Howard	Athletics Director
Nick Kelch	Associate Vice President for External Campuses/Director of EGSC Augusta
Courtney Patterson	Chief of Staff and Legal Counsel
Tifani Pool	Director of EGSC Statesboro
Harley Smith	Vice President for Institutional Advancement
Ronald Stalnaker	Acting Chief Business Officer
Catherine Whelan	Provost/Vice President for Academic and Student Affairs
Ashley Woods	Vice President for Information Technology



The East Georgia State College Foundation: 2023-24 Trustees

<b>Executive Board</b>			
<b>Last Name</b>	<b>First Name</b>	<b>Title/Alumnus</b>	<b>Status</b>
McNeely	Richard	Chair/Alumnus	Elected
Gray	Milton	Vice-Chair/Alumnus	Elected
Deceased		Past Chair	Elected
Donaldson	Matt	Secretary/Alumnus	Elected
Stalnaker	Ronald	Treasurer	Ex-officio-voting
Schecter	Dr. David	President of EGSC	Ex-officio-voting
Smith	Harley	Executive Director	Ex-officio-voting
<b>Active Members</b>			
Andrews	Brandon		Elected
Bertoch	Lisa	Alumnus	Elected
Conway	Olivia	Alumnus	Elected
Denmark	Jennie Wren		Elected
Derden	Dr. John		Elected
Donaldson	Matt	Secretary, Alumnus	Elected
Frye	Zac	Alumni	Elected
Gilmer	Elizabeth		Elected
Gray	Milton	Vice-Chair, Alumnus	Elected
Johnson	Wade		Elected
McNeely	Richard	Chair - Alumnus	Elected
Patterson	Ben		Elected
Porter	Juanita		Elected
Ray	Harriet		Elected
Sasser	Dr. Bobby		Elected
Terwilliger	Toni	Alumnus	Elected
Walden	Anson		Elected
Warnock	Ken	Alumnus	Elected

Updated August 2024

Source: EGSC Office of Institutional Advancement

# ADMISSIONS

**Applied, Accepted and Registered Fall Semester 2014-2023**

Fall Semester	Applied	Accepted	Registered	% of Applied Accepted	% of Applied Registered	% of Accepted Registered
2014	2,726	1,506	1,268	55.2%	46.5%	84.2%
2015	3,083	1,785	1,422	57.9%	46.1%	79.7%
2016	3,043	1,843	1,520	60.6%	50.0%	82.5%
2017	2,667	1,666	1,311	62.5%	49.2%	78.7%
2018	3,040	2,457	1,498	80.8%	49.3%	61.0%
2019	3,167	2,338	1,335	73.8%	42.2%	57.1%
2020	3,365	2,573	1,044	76.5%	31.0%	40.6%
2021	2,111	1,752	1,123	82.9%	53.2%	64.1%
2022	2,484	1,886	1,120	75.9%	45.1%	59.4%
2023	2,301	1,735	895	75.4%	38.9%	51.6%

Source: EGSC Office of Admissions

**Beginning Freshmen: Fall Semester 2014-2023**

Fall Semesters	2014	2015	2016	2017	2018	2019	2020	2021	2022	2023
Beginning Freshmen	1,007	1,095	1,006	954	1,086	1,037	678	654	675	531

**Mean Scholastic Aptitude Test (Old SAT) Scores for Beginning Freshmen: Fall Semester 2013-2021**

Fall Semesters	2013	2014	2015	2016	2017	2018	2019	2020	2021
Old SAT Average	870	873	864	864	856	877	915	857	993

**Mean Scholastic Aptitude Test (New SAT) Scores for Beginning Freshmen: Fall Semester 2016-2023**

Fall Semesters	2016	2017	2018	2019	2020	2021	2022	2023
New SAT Average	47	47	48	47	48	51	48	47

Source: EGSC Office of Strategic Planning and Institutional Research

**Georgia High Schools of Beginning Freshmen: Fall 2023**

High Schools	Augusta	Statesboro	Swainsboro	Total
Swainsboro High School		2	20	22
Effingham County High School		12	6	18
Academy Of Richmond County	12	2	3	17
South Effingham High School		14	3	17
Statesboro High School		14	3	17
Grovetown High School	7		7	14
Metter High School	1	3	10	14
Burke County Comprehensive Hs	2	6	5	13
Westside High School	7	1	5	13
Emanuel County Institute		1	10	11
Evans High School	8	1	2	11
Treutlen High School			11	11
Lakeside High School-Evans	7	2	1	10
Lucy C Laney High School	4	1	5	10
<b>Subtotal: 17 High Schools, 10 or more</b>				<b>198</b>
<b>Subtotal: 212 High Schools, fewer than 10</b>				<b>333</b>
<b>Total: 261 High Schools</b>				<b>531</b>

Source: EGSC Office of Strategic Planning and Institutional Research

# STUDENT FINANCIAL INFORMATION

**Semester Tuition and Fees Fall 2023 – Spring 2024**

**In State Tuition and Fees**

Credit Hours	In State Tuition	EGSC Augusta †		EGSC Statesboro ‡		Swainsboro	
		Fees	Tuition & Fees	Fees	Tuition & Fees	Fees	Tuition & Fees
15	1,425.00	765.00	2,190.00	917.00	2,342.00	228.00	1,653.00
14	1,330.00	765.00	2,095.00	917.00	2,247.00	228.00	1,558.00
13	1,235.00	765.00	2,000.00	917.00	2,152.00	228.00	1,463.00
12	1,140.00	765.00	1,905.00	917.00	2,057.00	228.00	1,368.00
11	1,045.00	765.00	1,810.00	917.00	1,962.00	228.00	1,273.00
10	950.00	765.00	1,715.00	917.00	1,867.00	228.00	1,178.00
9	855.00	765.00	1,620.00	917.00	1,772.00	228.00	1,083.00
8	760.00	765.00	1,525.00	917.00	1,677.00	228.00	988.00
7	665.00	765.00	1,430.00	917.00	1,582.00	228.00	893.00
6	570.00	765.00	1,335.00	917.00	1,487.00	228.00	798.00
5	475.00	765.00	1,240.00	917.00	1,392.00	228.00	703.00
4	380.00	765.00	1,145.00	917.00	1,297.00	228.00	608.00
3	285.00	665.00	950.00	150.00	435.00	95.00	380.00
2	190.00	665.00	855.00	150.00	340.00	95.00	285.00
1	95.00	665.00	760.00	150.00	245.00	95.00	190.00

**EGSC Augusta †:** Fees include \$615 Augusta University – Summerville fee at every credit hour level

**EGSC Statesboro ‡:** Fees include \$667 Georgia Sothern University fee for 4 or more credit hours

**Out of State Tuition and Fees**

Credit Hours	Out of State Tuition	EGSC Augusta †		EGSC Statesboro ‡		Swainsboro	
		Fees	Tuition & Fees	Fees	Tuition & Fees	Fees	Tuition & Fees
15	5,395.00	765.00	6,160.00	917.00	6,312.00	228.00	5,623.00
14	5,035.38	765.00	5,800.38	917.00	5,952.38	228.00	5,263.38
13	4,675.71	765.00	5,440.71	917.00	5,592.71	228.00	4,903.71
12	4,316.04	765.00	5,081.04	917.00	5,233.04	228.00	4,544.04
11	3,956.37	765.00	4,721.37	917.00	4,873.37	228.00	4,184.37
10	3,596.70	765.00	4,361.70	917.00	4,513.70	228.00	3,824.70
9	3,237.03	765.00	4,002.03	917.00	4,154.03	228.00	3,465.03
8	2,877.36	765.00	3,642.36	917.00	3,794.36	228.00	3,105.36
7	2,517.69	765.00	3,282.69	917.00	3,434.69	228.00	2,745.69
6	2,158.02	765.00	2,923.02	917.00	3,075.02	228.00	2,386.02
5	1,798.35	765.00	2,563.35	917.00	2,715.35	228.00	2,026.35
4	1,438.68	765.00	2,203.68	917.00	2,355.68	228.00	1,666.68
3	1,079.01	665.00	1,744.01	150.00	1,229.01	95.00	1,174.01
2	719.34	665.00	1,384.34	150.00	869.34	95.00	814.34
1	359.67	665.00	1,024.67	150.00	509.67	95.00	454.67

**EGSC Six SACSCOC Peer Colleges**

Atlanta Metropolitan State College (Atlanta, GA)

Florida Gateway College (Lake City, FL)

Georgia Highlands College (Rome, GA)

Lake-Sumter State College (Leesburg, FL)

Santa Fe College (Gainesville, FL)

South Georgia State College (Douglas, GA)

**EGSC Fifteen IPEDS Peer Colleges:**

Atlanta Metropolitan State College (Atlanta, GA)

Bismarck State College (Bismarck, ND)

Centralia College (Centralia, WA)

Clover Park Technical College (Lakewood, WA)

Columbia Basin College (Pasco, WA)

Florida Gateway College (Lake City, FL)

Georgia Highlands College (Rome, GA)

Kent State University at Ashtabula (Ashtabula, OH)

Kent State University at Tuscarawas (New Philadelphia, OH)

Lake-Sumter State College (Leesburg, FL)

Ohio University-Chillicothe Campus (Chillicothe, OH)

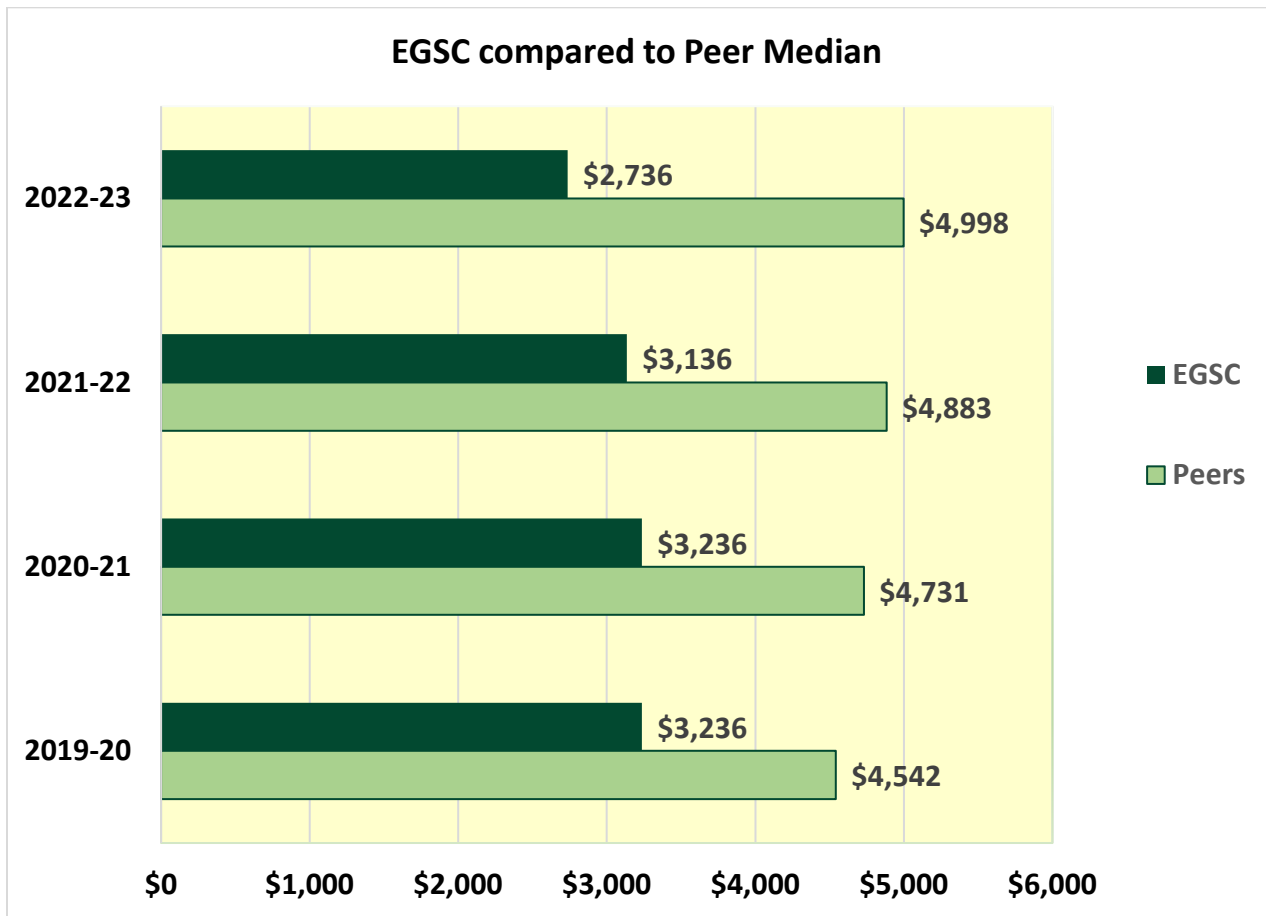
Ohio University-Eastern Campus (Saint Clairsville, OH)

Santa Fe College (Gainesville, FL)

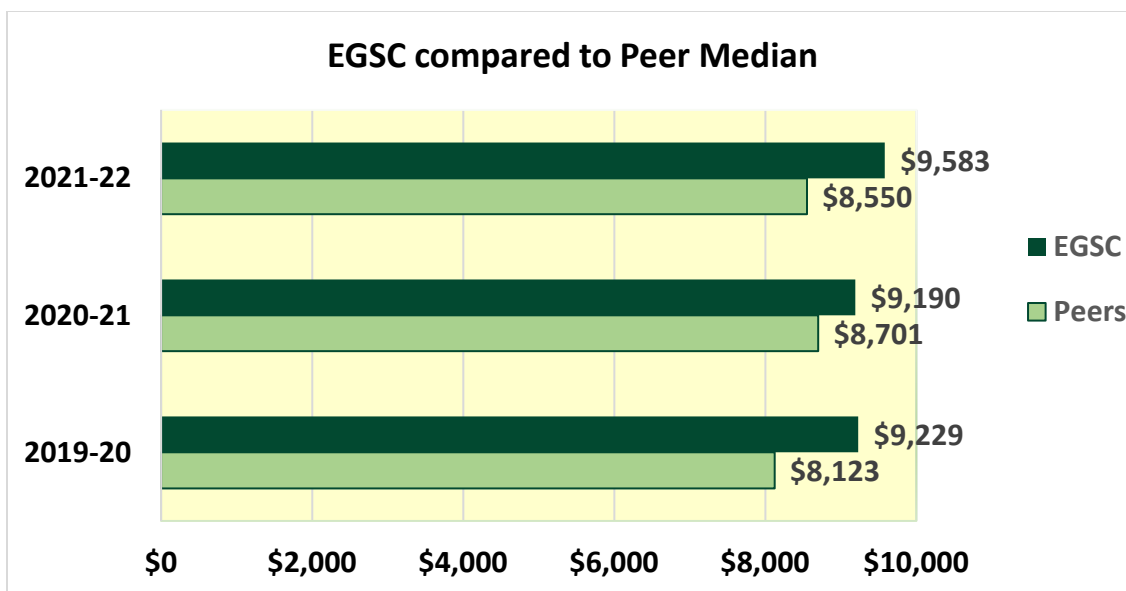
South Georgia State College (Douglas, GA)

Yakima Valley College (Yakima, WA)

Academic Year Tuition and Fees for Full-Time, First Time Undergraduates



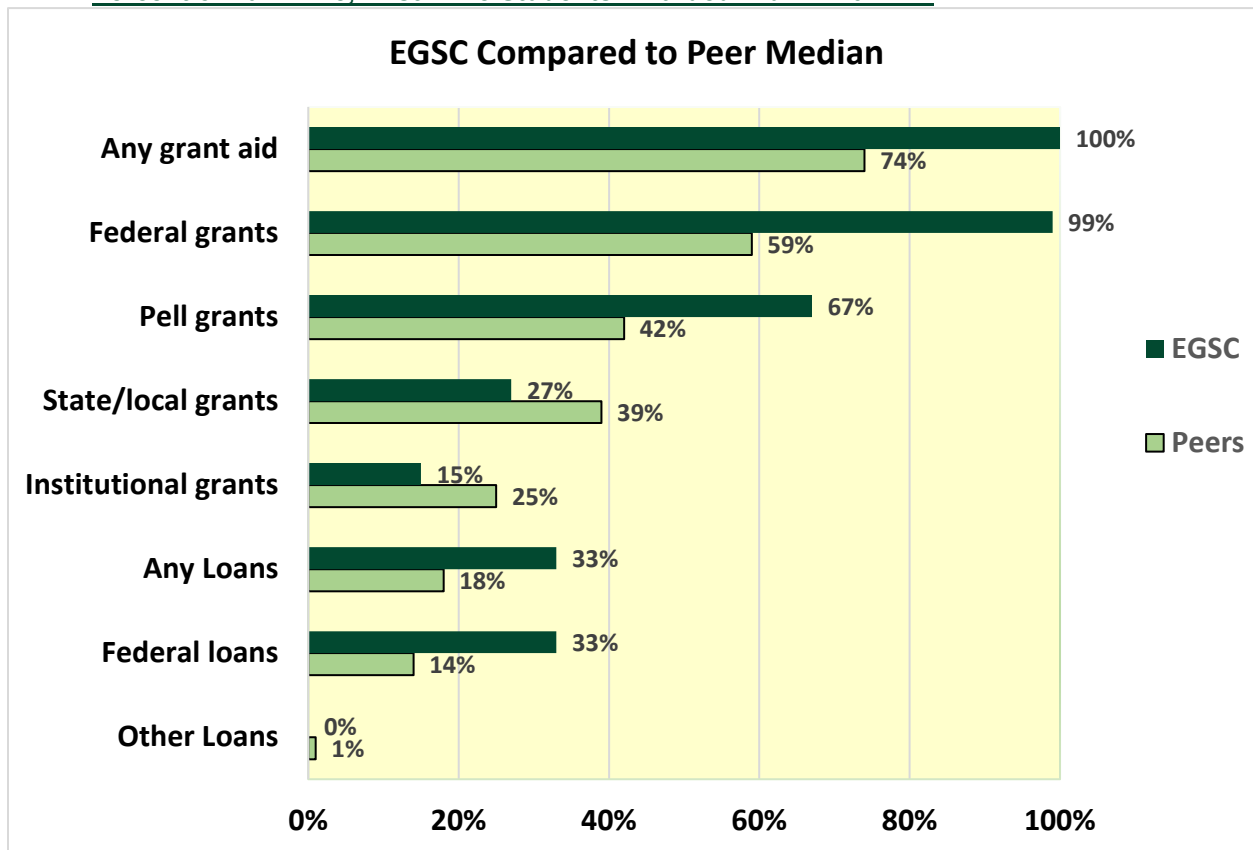
Academic Year Average Net Price of Attendance for Full-Time, First Time Undergraduates



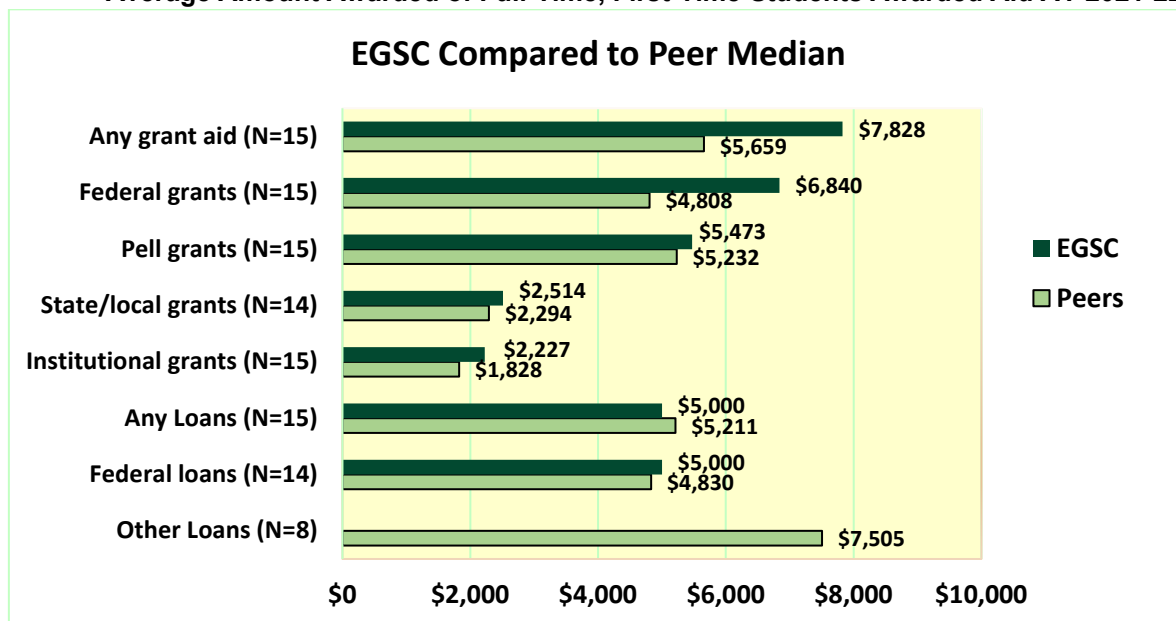
Source: IPEDS (Integrated Postsecondary Education Data System)



Percent of Full-Time, First-Time Students Awarded Aid AY 2021-22



**Average Amount Awarded of Full-Time, First-Time Students Awarded Aid AY 2021-22**



Source: IPEDS (Integrated Postsecondary Education Data System)

# ACADEMIC INFORMATION

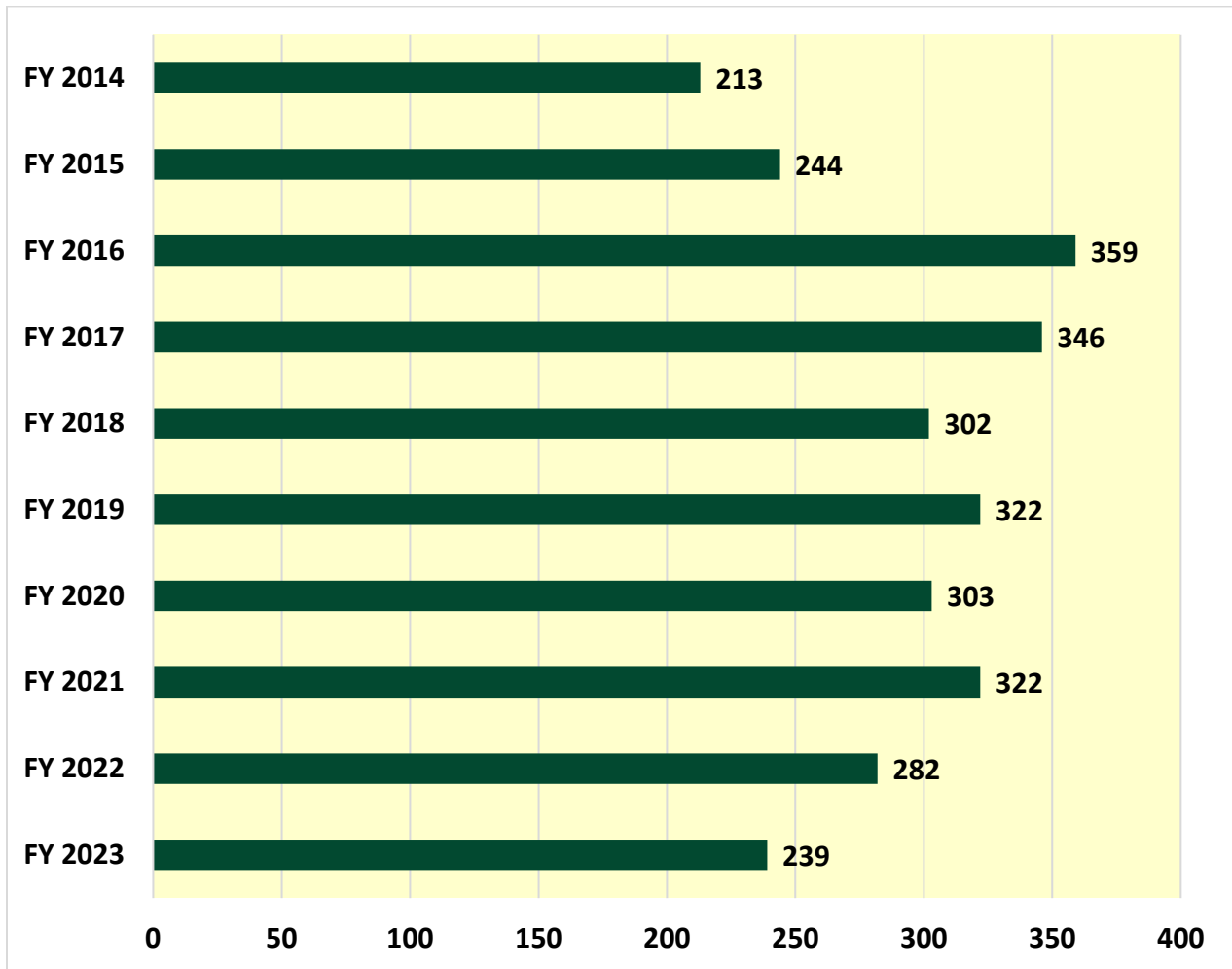
Associate and Baccalaureate Degree List

with Classification of Instructional Program (CIP) Codes

<b>Degree Acronym</b>	<b>CIP CODE</b>	<b>Degree Level</b>	<b>Degree Description</b>
<b>Continuing Degree Programs</b>			
AA	13041401	Associate	Associate of Arts in Elementary Education
AA	24010101	Associate	Associate of Arts in Liberal Arts
AA	45010101	Associate	Associate of Arts in Social Sciences
AS	30180101	Associate	Associate of Science in Natural Sciences
AS	52020101	Associate	Associate of Science in Business Administration
<b>USG eMajors</b>			
AS	30710400	Associate	Associate of Science in Financial Technology (Spring 2023)
BS	43010300	Bachelor	Bachelor of Science with a Major in Criminal Justice (Fall 2023)
BSOL	52021300	Bachelor	Bachelor of Science Degree in Organizational Leadership (beginning in Spring Semester 2024)
<b>Degree Programs Closed to New Admissions August 11, 2021</b>			
AA	09010001	Associate	Associate of Arts in Communication Arts
AA	23010101	Associate	Associate of Arts in English
AA	42010101	Associate	Associate of Arts in Psychology
AA	43010401	Associate	Associate of Arts in Criminal Justice
AA	43020202	Associate	Associate of Arts in Fire and Emergency Services Administration
AA	45100101	Associate	Associate of Arts in Political Science
AA	45110101	Associate	Associate of Arts in Sociology
AA	50070101	Associate	Associate of Arts in Art
AA	54010101	Associate	Associate of Arts in History
AS	26010101	Associate	Associate of Science in Biology
AS	27010101	Associate	Associate of Science in Mathematics
AS	36010101	Associate	Associate of Science in Recreation
AS	40050101	Associate	Associate of Science in Chemistry
BA	43020201	Bachelor	Bachelor of Arts with a Major in Fire and Emergency Services Administration
BS	26010101	Bachelor	Bachelor of Science with a Major in Biology
BS	51380105	Bachelor	Bachelor of Science with a Major in Nursing, RN to BSN
CER0	50060501	Certificate (< 1 Year)	Certificate of Less than One Year in Digital Photography

Source: EGSC Office of Strategic Planning and Institutional Research

EGSC Degrees Conferred FY 2014 to FY 2023



Source: EGSC Office of Strategic Planning and Institutional Research

Degrees Conferred by Academic Program FY 2018 – FY 2023

CIP Code and Degree	Academic Program	FY 2018	FY 2019	FY 2020	FY 2021	FY 2022	FY 2023
24.0101. Associate of Arts	Liberal Arts (Core Curriculum)	200	163	151	136	110	90
42.0101. Associate of Arts	Psychology**	29	31	38	37	29	27
52.0201. Associate of Science	Business Administration*	15	25	31	35	24	32
51.3801. Bachelor of Science	Nursing, RN to BSN**	-	22	11	10	19	2
13.0414. Associate of Arts	Elementary Education*†	13	14	17	37	36	27
45.0101 Associate of Arts	Social Sciences	-	-	-	-	-	11
45.1101. Associate of Arts	Sociology**	14	13	8	9	5	3
43.0104. Associate of Arts	Criminal Justice**	10	11	9	19	18	15
54.0101. Associate of Arts	History**	3	10	1	6	2	2
40.0501. Associate of Science	Chemistry**	2	6	5	5	3	-
45.1001. Associate of Arts	Political Science**	4	5	3	1	2	-
50.0701. Associate of Arts	Art**	3	4	6	7	5	2
26.0101. Associate of Science	Biology**	1	4	5	7	6	1
26.0101. Bachelor of Science	Biology	3	2	3	3	6	4
30.1801 Associate of Science	Natural Sciences	-	-	-	-	-	3
43.0202. Associate of Arts	FESA**‡	1	2	3	2	6	5
43.0202. Bachelor of Arts	FESA**‡	2	3	7	2	7	13
23.0101. Associate of Arts	English**	-	3	1	1	-	-
09.0100. Associate of Arts	Communication Arts**	2	2	3	4	1	1
27.0101. Associate of Science	Mathematics**	-	2	1	1	3	1
<b>Total</b>		<b>302</b>	<b>322</b>	<b>303</b>	<b>322</b>	<b>282</b>	<b>239</b>
Associate Degrees		297	295	282	307	250	220
Bachelor Degrees		5	27	21	15	32	19

\*Academic Programs begun Fall Semester 2017

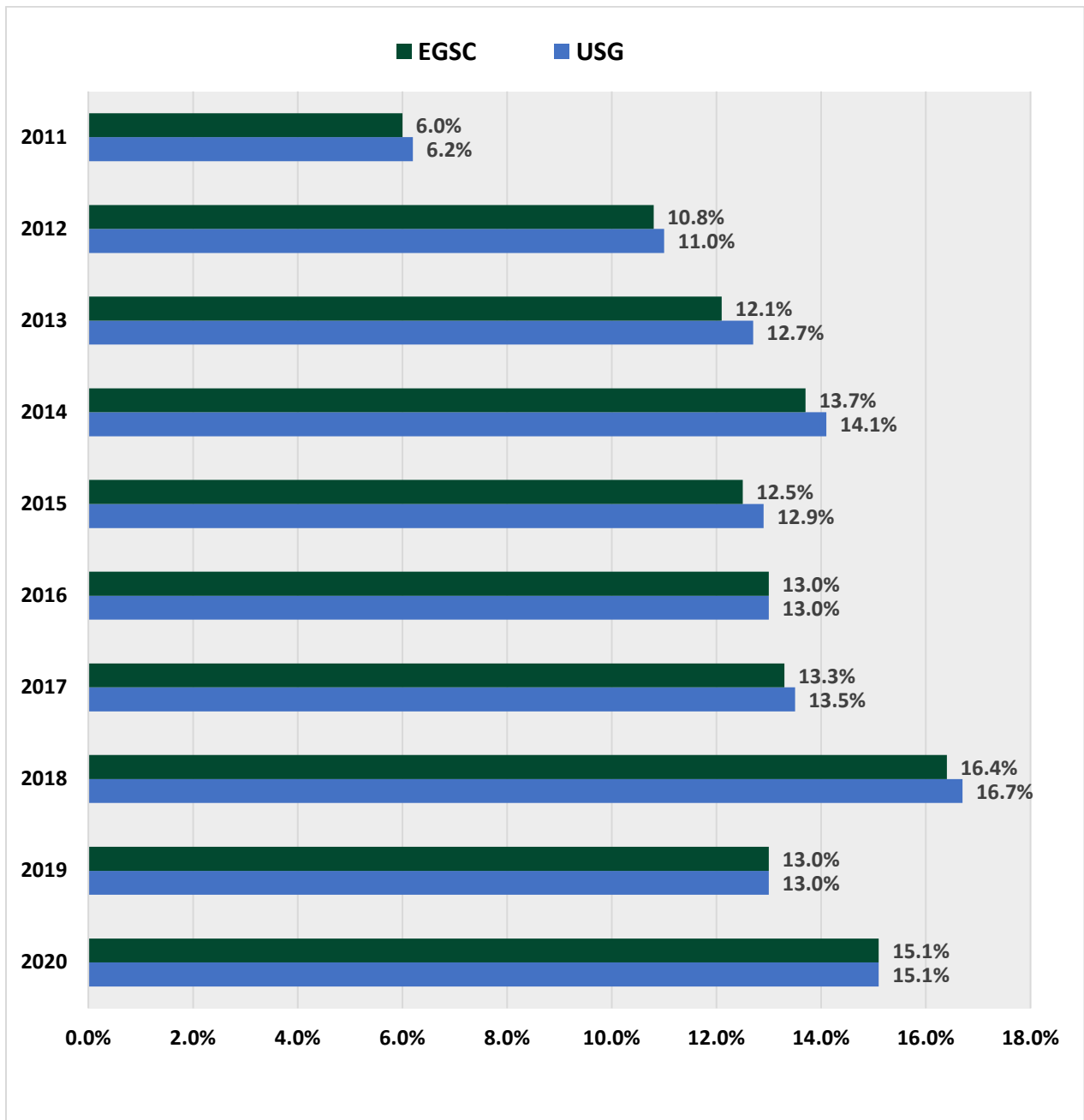
\*\* Academic Programs begun Fall Semester 2017 and closed to new admissions August 11, 2021

†Formally Early Childhood Education

‡Fire and Emergency Services Administration

Source: EGSC Office of Strategic Planning and Institutional Research

EGSC/USG 3 Year Graduation Rates for First-Time, Full-Time Fall 2011 – 2020 Cohorts



Source: University System of Georgia Office of Research and Policy Analysis

**Distribution of Grades by Class: Academic Year 2022-23**

Fall 2022	A	B	C	D	F	IP	W	WF	Total
Freshman	23.3%	15.7%	13.3%	5.6%	30.8%	3.2%	6.8%	1.4%	100.0%
Sophomore	38.7%	23.9%	15.3%	5.7%	11.0%	0.1%	4.9%	0.4%	100.0%
Junior	47.7%	23.8%	15.2%	4.3%	5.0%	0.0%	3.8%	0.2%	100.0%
Senior	51.3%	15.0%	16.3%	10.0%	3.8%	0.0%	3.8%	0.0%	100.0%
Overall	28.9%	18.2%	13.9%	5.6%	24.0%	2.2%	6.1%	1.1%	100.0%

Spring 2023	A	B	C	D	F	IP	W	WF	Total
Freshman	20.7%	15.9%	12.9%	6.0%	32.2%	3.3%	8.2%	0.8%	100.0%
Sophomore	38.9%	24.5%	15.1%	5.4%	10.7%	0.1%	4.9%	0.3%	100.0%
Junior	50.1%	26.3%	12.2%	4.8%	3.6%	0.0%	3.1%	0.0%	100.0%
Senior	68.8%	17.5%	6.3%	2.5%	1.3%	0.0%	3.8%	0.0%	100.0%
Overall	30.0%	19.6%	13.4%	5.7%	22.3%	1.9%	6.6%	0.6%	100.0%

Source: EGSC Office of Strategic Planning and Institutional Research

**Participation in Education Abroad at the East Georgia State College: Academic Years 2009-10 through 2018-19 (Source: EGSC Study Abroad Director)**

EGSC Study Abroad Program (interrupted by COVID-19 in 2020)	No. Students 2010-2019
<b>EGSC Study Abroad Students by Location</b>	
Costa Rica (UGA Campus)	56
Italy	6
Paris (European Council)	2
Cuba	1
South Korea (Council on International Education Exchange)	1
<b>EGSC Study Abroad Students by Ethnicity</b>	
White (Non-Hispanic)	53
African American	10
Hispanic	3

**Library Resources FY 2021-22 (Source: IPEDS EGSC Academic Libraries Spring 2023 Survey)**

Library Collections/Circulation	Physical Collection	Digital/Electronic Collection
Books	47,213	586,577
Databases	-	277
Media	1,653	37,970
Serials	41	45,563
Total Collection	48,907	670,387
Library Circulation	1,172	91,650

**Library Visitors, Fiscal Years 2018-19 through 2022-23**

Fiscal Years	FY 2018-19	FY 2019-20	FY 2020-21	FY 2021-22	FY 2022-23
Total Visits	81,265	72,026	22,753	42,903	53,254

Source: EGSC Library

Credits Hours Earned to Attempted by Semester and Course Delivery Mode Summer 2012 – Spring 2023

Semester	Credits Earned	Credits Attempted	Percent Completion
Summer 2012	4,239	6,131	69.1%
Summer 2013	4,506	5,889	76.5%
Summer 2014	3,861	4,771	80.9%
Summer 2015	4,069	5,002	81.3%
Summer 2016	4,472	5,573	80.2%
Summer 2017	4,646	5,644	82.3%
Summer 2018	4,769	5,860	81.4%
Summer 2019	4,469	5,489	81.4%
Summer 2020	4,850	5,951	81.5%
Summer 2021	3,519	4,515	77.9%
Summer 2022	2,302	2,926	78.7%
Fall 2012	23,336	34,898	66.9%
Fall 2013	23,713	34,040	69.7%
Fall 2014	24,411	34,955	69.8%
Fall 2015	26,192	36,147	72.5%
Fall 2016	26,793	36,400	73.6%
Fall 2017	25,421	34,698	73.3%
Fall 2018	23,802	33,698	70.6%
Fall 2019	22,706	31,817	71.4%
Fall 2020	17,959	26,256	68.4%
Fall 2021	14,939	22,761	65.6%
Fall 2022	14,050	21,135	66.5%
Spring 2013	21,161	31,411	67.4%
Spring 2014	21,383	30,985	69.0%
Spring 2015	21,924	30,568	71.7%
Spring 2016	23,176	31,649	73.2%
Spring 2017	22,845	31,157	73.3%
Spring 2018	21,684	29,758	72.9%
Spring 2019	21,102	29,165	72.4%
Spring 2020	20,179	27,252	74.0%
Spring 2021	14,091	19,884	70.9%
Spring 2022	11,646	16,649	70.0%
Spring 2023	11,190	16,110	69.5%
<b>Total Credit Hours</b>	<b>499,405</b>	<b>699,144</b>	<b>71.4%</b>
Taking Face to Face Only Total	228,751	330,458	69.2%
Taking Online Only Total	72,079	102,274	70.5%
Taking Both Face to Face and Online Total	198,575	266,412	74.5%

Source: EGSC Office of Strategic Planning and Institutional Research



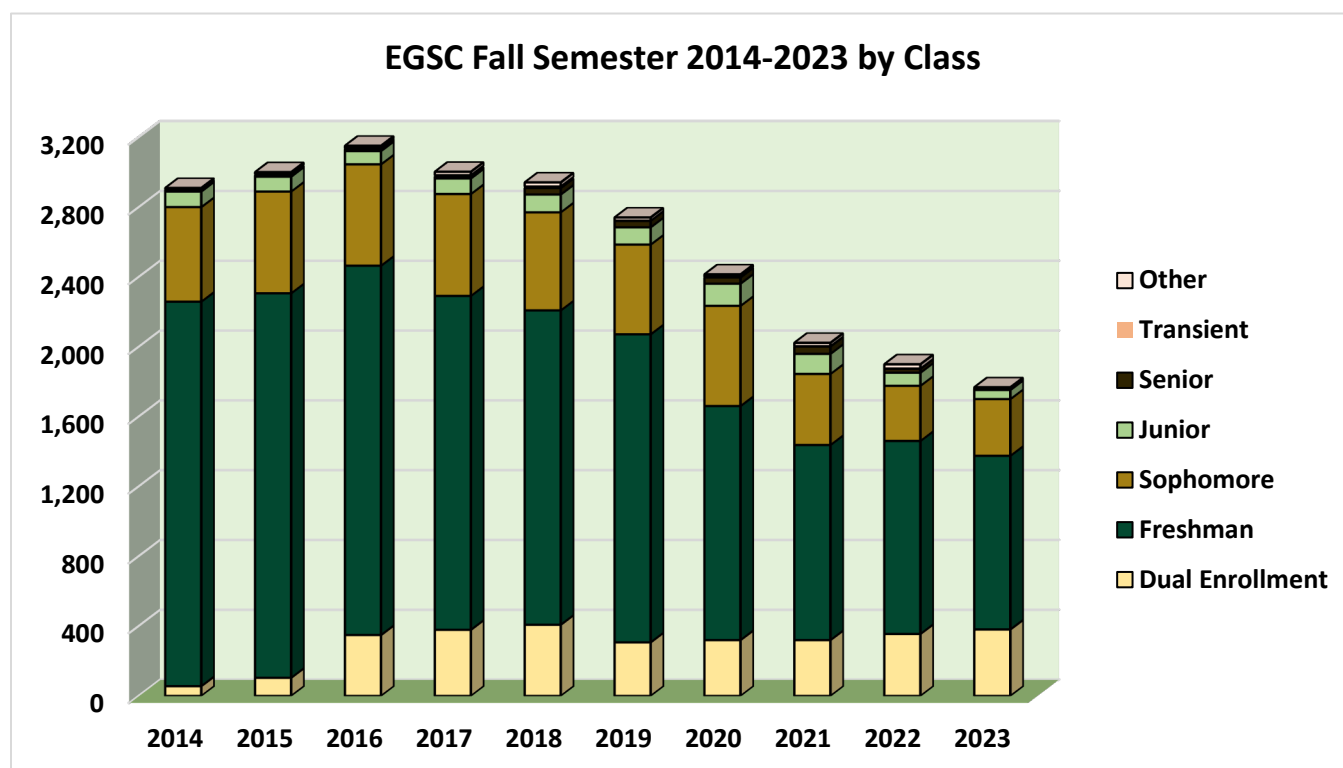
# ENROLLMENT

**Enrollment Counts by Class Level: Fall Semesters 2014-2023**

Fall Semester	2014	2015	2016	2017	2018	2019	2020	2021	2022	2023
Dual Enrolled	56	104	349	379	408	307	320	320	355	381
Freshman	2,203	2,203	2,116	1,913	1,801	1,765	1,341	1,118	1,106	995
Sophomore	542	583	581	584	562	514	574	407	316	325
Junior	89	85	76	89	102	99	127	115	75	52
Senior	9	7	12	10	37	37	36	42	22	10
Transient	7	7	5	9	9	1	5	2	2	5
Other	4	12	13	19	23	18	12	19	24	-
<b>Fall Term Total Enrollment</b>	<b>2,910</b>	<b>3,001</b>	<b>3,152</b>	<b>3,003</b>	<b>2,942</b>	<b>2,741</b>	<b>2,415</b>	<b>2,023</b>	<b>1,900</b>	<b>1,768</b>

**Enrollment Percentages by Class Level: Fall Semesters 2014-2023**

Fall Semester	2014	2015	2016	2017	2018	2019	2020	2021	2022	2023
Dual Enrolled	1.9%	3.5%	11.1%	12.6%	13.9%	11.2%	13.3%	15.8%	18.7%	21.5%
Freshman	75.7%	73.4%	67.1%	63.7%	61.2%	64.4%	55.5%	55.3%	58.2%	56.3%
Sophomore	18.6%	19.4%	18.4%	19.4%	19.1%	18.8%	23.8%	20.1%	16.6%	18.4%
Junior	3.1%	2.8%	2.4%	3.0%	3.5%	3.6%	5.3%	5.7%	3.9%	2.9%
Senior	0.3%	0.2%	0.4%	0.3%	1.3%	1.3%	1.5%	2.1%	1.2%	0.6%
Transient	0.2%	0.2%	0.2%	0.3%	0.3%	0.0%	0.2%	0.1%	0.1%	0.3%
Other	0.1%	0.4%	0.4%	0.6%	0.8%	0.7%	0.5%	0.9%	1.3%	-



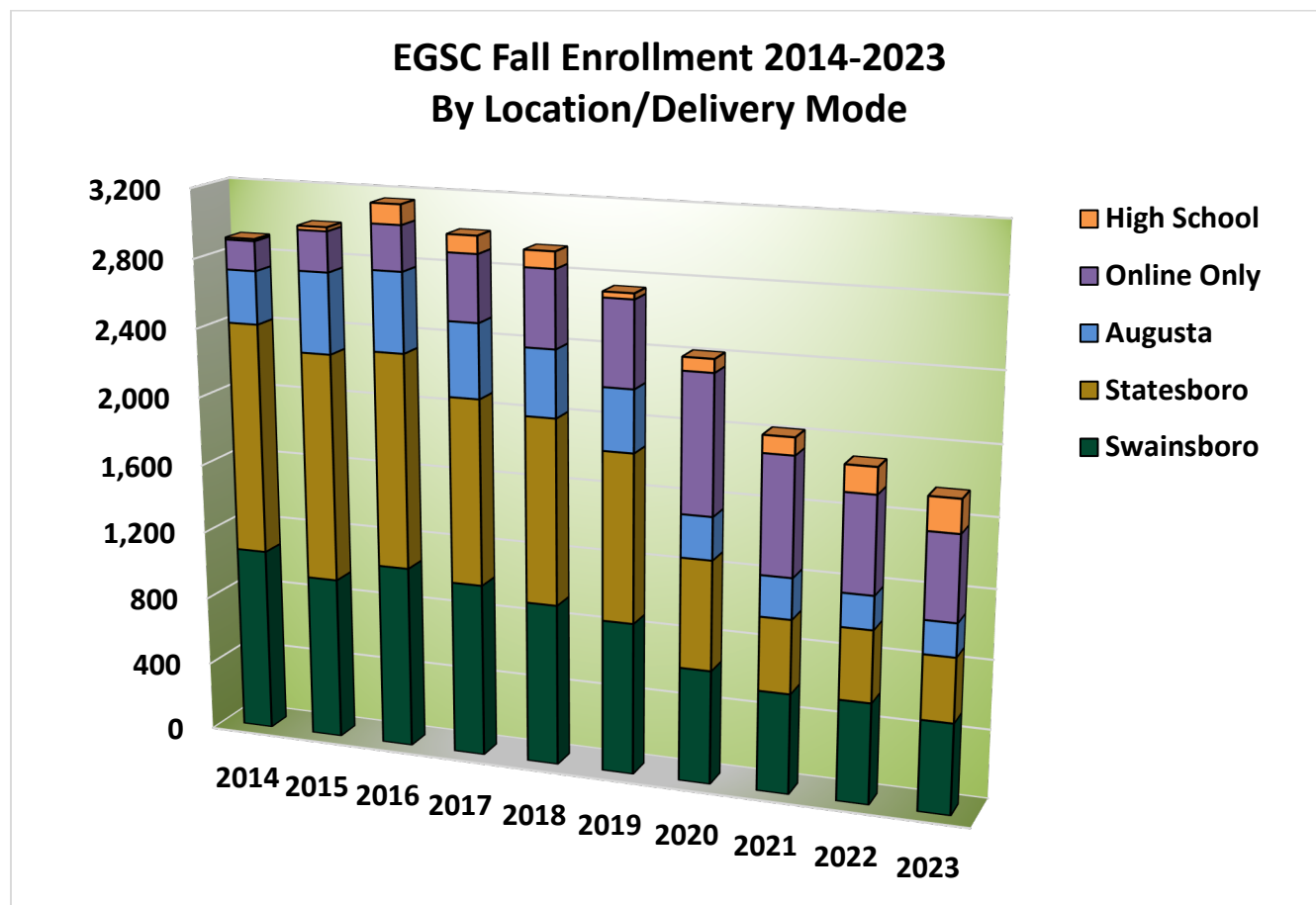
Source: EGSC Office of Strategic Planning and Institutional Research

**Enrollment Counts by Location/Delivery Mode: Fall Semester 2014-2023**

Fall Semester	2014	2015	2016	2017	2018	2019	2020	2021	2022	2023
High School	12	23	115	101	96	33	76	100	151	191
Online Only	171	232	260	383	443	493	797	680	558	490
Augusta	307	468	462	429	386	357	246	236	193	191
Statesboro	1,343	1,327	1,249	1,078	1,075	973	634	425	413	370
Swainsboro	1,077	951	1,066	1,012	942	885	662	582	585	526
<b>Total Enrollment</b>	<b>2,910</b>	<b>3,001</b>	<b>3,152</b>	<b>3,003</b>	<b>2,942</b>	<b>2,741</b>	<b>2,415</b>	<b>2,023</b>	<b>1,900</b>	<b>1,768</b>

**Enrollment Percentages by Location/Delivery Mode: Fall Semester 2013-2022**

Fall Semester	2014	2015	2016	2017	2018	2019	2020	2021	2022	2023
High School	0.4%	0.8%	3.6%	3.4%	3.3%	1.2%	3.1%	4.9%	7.9%	10.8%
Online Only	5.9%	7.7%	8.2%	12.8%	15.1%	18.0%	33.0%	33.6%	29.4%	27.7%
Augusta	10.5%	15.6%	14.7%	14.3%	13.1%	13.0%	10.2%	11.7%	10.2%	10.8%
Statesboro	46.2%	44.2%	39.6%	35.9%	36.5%	35.5%	26.3%	21.0%	21.7%	20.9%
Swainsboro	37.0%	31.7%	33.8%	33.7%	32.0%	32.3%	27.4%	28.8%	30.8%	29.8%



Source: EGSC Office of Strategic Planning and Institutional Research

**Fall Semester 2023 Counts of Gender and Ethnicity by Class Level**

Demographic Profile by Class	Freshman	Sophomore	Junior	Senior	Total	
<b>Total Enrollment by Class</b>	<b>1,381</b>	<b>325</b>	<b>52</b>	<b>10</b>	<b>1,768</b>	
<b>Female</b>	<b>763</b>	<b>198</b>	<b>33</b>	<b>8</b>	<b>1,002</b>	
White (Non-Hispanic Origin)	320	86	9	1	416	
Black or African American	303	84	21	7	415	
Multiracial	63	14	2	0	79	
Ethnicity Unknown	35	3	1		39	
Hispanic	24	10	0		34	
Asian	13	1			14	
Native Hawaiian/Pacific Island	3	0			3	
American Indian or Alaskan Native	2				2	
<b>Male</b>	<b>618</b>	<b>127</b>			<b>19</b>	<b>2</b>
White (Non-Hispanic Origin)	268	61	9		1	339
Black or African American	238	50	5			293
Multiracial	62	13	5	1	81	
Ethnicity Unknown	21	0	0	0	21	
Hispanic	12	3			15	
Asian	14	0			14	
American Indian or Alaskan Native	2				2	

**Fall Semester 2023 Percentages of Total Enrollment Gender and Ethnicity by Class Level**

Demographic Profile by Class	Freshman	Sophomore	Junior	Senior	Total	
<b>Total Enrollment by Class</b>	<b>78.1%</b>	<b>18.4%</b>	<b>2.9%</b>	<b>0.6%</b>	<b>100.0%</b>	
<b>Female</b>	<b>43.2%</b>	<b>11.2%</b>	<b>1.9%</b>	<b>0.5%</b>	<b>56.7%</b>	
White (Non-Hispanic Origin)	18.1%	4.9%	0.5%	0.1%	23.5%	
Black or African American	17.1%	4.8%	1.2%	0.4%	23.5%	
Multiracial	3.6%	0.8%	0.1%	0.0%	4.5%	
Ethnicity Unknown	2.0%	0.2%	0.1%		2.2%	
Hispanic	1.4%	0.6%	0.0%		1.9%	
Asian	0.7%	0.1%			0.8%	
Native Hawaiian/Pacific Island	0.2%	0.0%			0.2%	
American Indian or Alaskan Native	0.1%				0.1%	
<b>Male</b>	<b>35.0%</b>	<b>7.2%</b>			<b>1.1%</b>	<b>0.1%</b>
White (Non-Hispanic Origin)	15.2%	3.5%	0.5%		0.1%	19.2%
Black or African American	13.5%	2.8%	0.3%		0.0%	16.6%
Multiracial	3.5%	0.7%	0.3%	0.1%	4.6%	
Ethnicity Unknown	1.2%	0.0%	0.0%	0.0%	1.2%	
Hispanic	0.7%	0.2%			0.8%	
Asian	0.8%	0.0%			0.8%	
American Indian or Alaskan Native	0.1%				0.1%	

Source: EGSC Office of Strategic Planning and Institutional Research

**Fall Semester 2023 Counts of Gender and Ethnicity by Location/Mode of Delivery**

Gender/Ethnicity	Augusta	Statesboro	Swainsboro	High School	Online Only	Total
<b>Total</b>	<b>191</b>	<b>370</b>	<b>526</b>	<b>191</b>	<b>490</b>	<b>1,768</b>
<b>Female</b>	<b>112</b>	<b>191</b>	<b>269</b>	<b>112</b>	<b>318</b>	<b>1,002</b>
White (Non-Hispanic Origin)	35	95	101	57	128	416
Black or African American	55	63	134	27	136	415
Multiracial	7	18	19	10	25	79
Ethnicity Unknown	6	2	5	8	18	39
Hispanic	4	13	7	3	7	34
Asian	5		2	3	4	14
Native Hawaiian/Pacific		0	0	3		3
Am. Indian or Alaskan	0		1	1	0	2
<b>Male</b>	<b>79</b>	<b>179</b>	<b>257</b>	<b>79</b>	<b>172</b>	<b>766</b>
White (Non-Hispanic Origin)	24	90	97	44	84	339
Black or African American	39	62	119	10	63	293
Multiracial	6	20	29	9	17	81
Ethnicity Unknown	4	2	5	7	3	21
Asian	4	3	4	0	4	15
Hispanic	2	1	3	7	1	14
Native Hawaiian/Pacific		0		2		2
Am. Indian or Alaskan	0	1	0	0	0	1

**Fall Semester 2023 Percentages of Total Enrollment by Gender and Ethnicity for Location/Mode of Delivery**

Gender/Ethnicity	Augusta	Statesboro	Swainsboro	High School	Online Only	Total
<b>Total</b>	<b>10.8%</b>	<b>20.9%</b>	<b>29.8%</b>	<b>10.8%</b>	<b>27.7%</b>	<b>100.0%</b>
<b>Female</b>	<b>6.3%</b>	<b>10.8%</b>	<b>15.2%</b>	<b>6.3%</b>	<b>18.0%</b>	<b>56.7%</b>
White (Non-Hispanic Origin)	2.0%	5.4%	5.7%	3.2%	7.2%	23.5%
Black or African American	3.1%	3.6%	7.6%	1.5%	7.7%	23.5%
Multiracial	0.4%	1.0%	1.1%	0.6%	1.4%	4.5%
Ethnicity Unknown	0.3%	0.1%	0.3%	0.5%	1.0%	2.2%
Hispanic	0.2%	0.7%	0.4%	0.2%	0.4%	1.9%
Asian	0.3%		0.1%	0.2%	0.2%	0.8%
Native Hawaiian/Pacific		0.0%	0.0%	0.2%		0.2%
Am. Indian or Alaskan Native	0.0%		0.1%	0.1%	0.0%	0.1%
<b>Male</b>	<b>4.5%</b>	<b>10.1%</b>	<b>14.5%</b>	<b>4.5%</b>	<b>9.7%</b>	<b>43.3%</b>
White (Non-Hispanic Origin)	1.4%	5.1%	5.5%	2.5%	4.8%	19.2%
Black or African American	2.2%	3.5%	6.7%	0.6%	3.6%	16.6%
Multiracial	0.3%	1.1%	1.6%	0.5%	1.0%	4.6%
Ethnicity Unknown	0.2%	0.1%	0.3%	0.4%	0.2%	1.2%
Asian	0.2%	0.2%	0.2%	0.0%	0.2%	0.8%
Hispanic	0.1%	0.1%	0.2%	0.4%	0.1%	0.8%
Native Hawaiian/Pacific		0.0%		0.1%		0.1%
Am. Indian or Alaskan Native	0.0%	0.1%	0.0%	0.0%	0.0%	0.1%

Source: EGSC Office of Strategic Planning and Institutional Research

**Enrolled Georgia Residents County by Total Enrollment and by Assigned Campus: Fall 2023**

Georgia County	Enrolled	% Total Enrollment	EGSC Augusta		
			Georgia County	Enrolled	% Enrollment
Columbia	260	14.7%	Columbia	205	55.9%
Richmond	176	10.0%	Richmond	113	30.8%
Emanuel	149	8.4%	17 Other GA Counties	28	7.6%
Bulloch	136	7.7%	<b>Total from Georgia</b>	<b>346</b>	<b>94.3%</b>
Chatham	64	3.6%	Total Out of State	21	5.7%
Candler	60	3.4%	<b>Total</b>	<b>367</b>	<b>100.0%</b>
Effingham	57	3.2%	EGSC Statesboro		
Screven	50	2.8%	Bulloch	91	18.9%
Toombs	48	2.7%	Effingham	37	7.7%
Bryan	40	2.3%	Chatham	32	6.6%
Fulton	39	2.2%	Bryan	24	5.0%
Burke	36	2.0%	Screven	21	4.4%
Washington	35	2.0%	Candler	17	3.5%
Jefferson	30	1.7%	Evans	17	3.5%
Evans	28	1.6%	Burke	13	2.7%
McDuffie	25	1.4%	Tattnall	12	2.5%
Tattnall	25	1.4%	Columbia	11	2.3%
Johnson	22	1.2%	Richmond	11	2.3%
Gwinnett	21	1.2%	60 Other GA Counties	179	37.1%
Henry	21	1.2%	<b>Total from Georgia</b>	<b>465</b>	<b>96.5%</b>
Treutlen	18	1.0%	Total Out of State	17	3.5%
Cobb	15	0.8%	<b>Total</b>	<b>482</b>	<b>100.0%</b>
Laurens	14	0.8%	EGSC Swainsboro		
Liberty	14	0.8%	Emanuel	141	15.3%
Forsyth	13	0.7%	Richmond	52	5.7%
Lincoln	12	0.7%	Bulloch	45	4.9%
Clayton	11	0.6%	Columbia	44	4.8%
DeKalb	11	0.6%	Candler	42	4.6%
Jenkins	11	0.6%	Toombs	38	4.1%
Appling	10	0.6%	Chatham	31	3.4%
Fayette	9	0.5%	Washington	31	3.4%
Houston	9	0.5%	Fulton	29	3.2%
Bibb	8	0.5%	Screven	29	3.2%
Glynn	8	0.5%	Jefferson	25	2.7%
Wilkes	8	0.5%	Johnson	22	2.4%
Colquitt	7	0.4%	Effingham	20	2.2%
Douglas	7	0.4%	Emanuel	19	2.1%
61 Other GA Counties	160	9.0%	70 Other GA Counties	271	29.5%
<b>Total from Georgia</b>	<b>1,667</b>	<b>94.3%</b>	<b>Total from Georgia</b>	<b>856</b>	<b>93.1%</b>
Total Out of State	101	5.7%	Total Out of State	63	6.9%
<b>Total</b>	<b>1,768</b>	<b>100.0%</b>	<b>Total</b>	<b>919</b>	<b>100.0%</b>

Source: EGSC Office of Strategic Planning and Institutional Research

**Fall Semester 2023 Percentages of Student Load by Class Level**

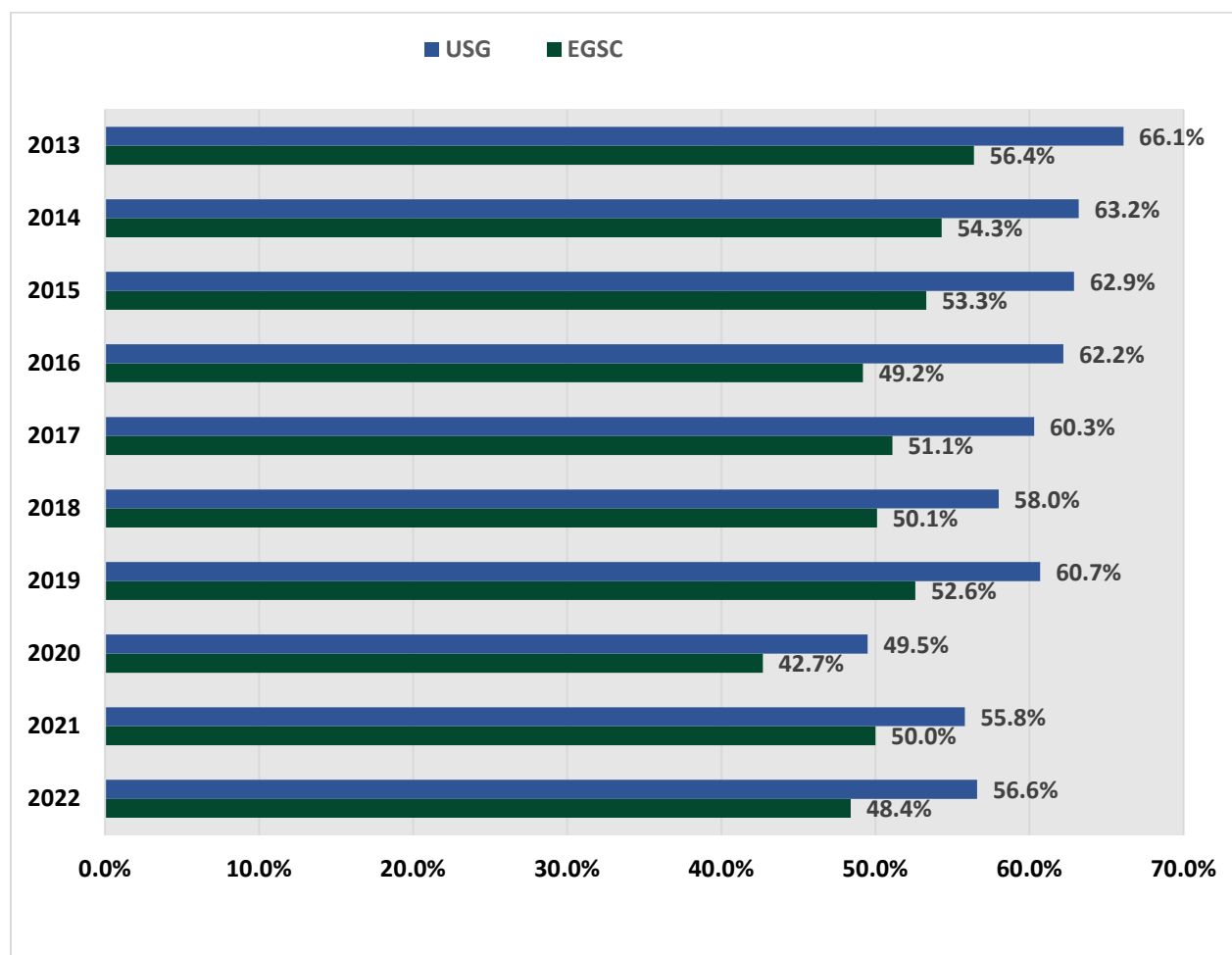
Student Load	Freshman	Sophomore	Junior	Senior	Overall
Full-time	57.5%	67.1%	38.5%	50.0%	58.7%
Part-time	42.5%	32.9%	61.5%	50.0%	41.3%

**Fall Semester 2023 Number of Veteran/Military Students**

Military Students	No.
MAA – Army	2
MAN – Military Active Navy	1
MG – Military National Guard	11
MR – Military Reservist	3
<b>Total</b>	<b>17</b>

Source: EGSC Office of Strategic Planning and Institutional Research

**Retention Rates for First-Time Full-Time Undergraduates: Entering Fall 2013 – 2022 Cohorts**



Source: University System of Georgia Office of Research and Policy Analysis

# STUDENT RELATED INFORMATOIN



Crime Statistics

EGSC Swainsboro for the 2020, 2021 and 2022 Calendar Years

Swainsboro Campus						
Criminal Offenses	Year	On Campus			Non-campus Building or Property	Public Property
		Student Housing Facilities	Other	On Campus Total		
Rape	2020	2	2	4	0	0
	2021	1	1	2	0	0
	2022	0	0	0	0	0
Fondling	2020	1	0	1	1	0
	2021	2	0	2	0	0
	2022	0	0	0	0	0
Aggravated Assault	2020	0	0	0	0	0
	2021	0	0	0	0	0
	2022	2	0	2	0	0
<b>Violence Against Women Act Offenses</b>						
Dating Violence	2020	2	0	2	0	0
	2021	0	0	0	0	0
	2022	6	0	6	0	0
Domestic Violence	2020	0	0	0	0	0
	2021	0	0	0	0	0
	2022	0	0	0	0	0
Stalking	2020	0	0	0	0	0
	2021	0	0	0	0	0
	2022	1	0	1	0	0
<b>Arrests</b>						
Liquor Law Violations	2020	0	0	0	1	0
	2021	0	0	0	0	0
	2022	3	0	3	0	0
Drug Law Violations	2020	0	0	0	3	0
	2021	0	0	0	0	3
	2022	0	0	0	0	0
Illegal Weapons Possession	2020	0	0	0	0	0
	2021	0	0	0	0	2
	2022	2	0	2	0	0
<b>Disciplinary Referrals</b>						
Liquor Law Violations	2020	3	0	3	0	0
	2021	11	0	11	0	0
	2022	0	0	0	0	0
Drug Law Violations	2020	3	2	5	0	0
	2021	9	1	10	0	2
	2022	15	1	16	0	0
Illegal Weapons Possession	2020	0	0	0	0	0
	2021	1	0	1	0	1
	2022	2	0	2	0	0

Source: EGSC Office of Public Safety Clery Report

**EGSC Graduate Alumni by State and Georgia County of Residence through Fall 2023**

State	Alumni	State	Alumni	State/Other	Alumni		
Alabama	1	Massachusetts	1	Tennessee	3		
Alaska	2	Michigan	4	Texas	2		
California	4	Minnesota	1	West Virginia	1		
Colorado	1	Missouri	3	Virginia	5		
Connecticut	1	Nevada	1	Wisconsin	1		
Florida	24	New Jersey	1	Louisiana	2		
Georgia	6,112	New York	4	Pennsylvania	3		
Illinois	3	North Carolina	5	Army Post Office	3		
Kansas	1	Rhode Island	1				
Kentucky	1	South Carolina	21	International	2		
Maryland	3	<b>Total</b>	<b>6,217</b>				
GA County	Alumni	GA County	Alumni	GA County	Alumni	GA County	Alumni
Appling	32	Emanuel	1,749	Lee	3	Rockdale	12
Bacon	3	Evans	90	Liberty	54	Screven	112
Baldwin	11	Fayette	10	Lincoln	5	Spalding	1
Barrow	5	Forsyth	6	Long	4	Stephens	4
Bartow	1	Franklin	13	Lowndes	3	Sumter	2
Ben Hill	2	Fulton	53	Macon	1	Talbot	1
Bibb	21	Glascok	5	Madison	2	Tattnall	205
Bleckley	3	Glynn	10	Marion	1	Telfair	12
Bryan	61	Grady	2	McDuffie	23	Thomas	5
Bulloch	579	Greene	20	McIntosh	4	Tift	3
Burke	119	Gwinnett	35	Meriwether	1	Toombs	543
Butts	3	Habersham	2	Mitchell	1	Treutlen	125
Camden	16	Hall	6	Monroe	1	Troup	2
Candler	293	Hancock	1	Montgomery	93	Upson	3
Carroll	5	Harrelson	1	Morgan	3	Walton	12
Chatham	103	Hart	2	Muscogee	4	Ware	6
Cherokee	9	Henry	64	Newton	10	Warren	2
Crawford	1	Houston	36	Oconee	5	Washington	44
Crisp	2	Jackson	15	Oglethorpe	2	Wayne	18
Dawson	1	Jasper	3	Paulding	5	Webster	1
Decatur	4	Jeff Davis	10	Peach	3	Wheeler	9
DeKalb	47	Jefferson	369	Pierce	4	Whitfield	1
Dodge	7	Jenkins	233	Pike	1	Wilcox	1
Dougherty	8	Johnson	238	Polk	2	Wilkes	11
Douglas	8	Lamar	1	Pulaski	3	Wilkinson	3
Early	2	Lanier	1	Putnam	2	<b>Total</b>	<b>6,040</b>
Effingham	99	Lauderdale	7	Rabun	1		
Elbert	4	Laurens	43	Richmond	187		

Source: EGSC Office of Institutional Advancement

# FACULTY AND STAFF

**Full-Time Faculty Spring Semester 2024**

Augusta Faculty	Discipline	Swainsboro Faculty	Discipline
Sega, Martiana F.	Biology	Goss, Natasha W.	Accounting/Business
Rideout, Edgar	Communications	Purcell, Desmal	Art
Chambers, Laura M. †	English	Simmons, Breana	Biology
Walter, Jason A. †	English	Dickens, Darlene C.*	Biology
Taylor, Aaron L. †	Mathematics	Wedincamp, Jimmy	Biology/Integrated Science
Caiazzo, Thomas A*.	Political Science	Cerpovicz, Paul	Chemistry
Dart, Jeniba J.*	Spanish	Davis, Theresa R.	CHOICE
Statesboro Faculty	Discipline	Jones, LaVonda F.*	Communications
Dickens, Darlene C.*	Biology	Watkins, Kristin M.	Criminal Justice
Smoyer, John H.*	Biology	Lee, Jaehyuk*	Economics
Jones, LaVonda F.*	Communications	Sharman, Sandra	Education
Lee, Jaehyuk*	Economics	Boudreaux, Armond	English
Czerny, Valerie	English	Brasher, Alan	English
Denton, Gina R.	English	Jordan, Annliss	English
Simmons, Amelia J.*	English/Education	Kraus, Christian N.	English/Film/Theater
Howell, Jeffery B. *	History	Palumbo, Carmine D.	English
Vess, Deborah L.	History/Art/Music	Simmons, Amelia J.* †	English
Barrs, Keith	Mathematics	Strickland, Julie M. †	English
Ward, Larie	Mathematics	Todd, Jessica A.	English/Spanish
Xie, Fang*	Mathematics	Howell, Jeffery B. *	History
Eaton, Johnna W.*	Physical Education	Drummer, Antre' M.	Mathematics
Mancill, Daniel K. †	Political Science	Gleissner, John	Mathematics
Lee, Deborah †	Psychology	Lynn, Candace M.	Mathematics
Altamirano, David	Sociology	Eaton, Johnna W.*	Physical Education
Dart, Jeniba J.*	Spanish	White, Yelena V.	Physics/Integrated Science
		Caiazzo, Thomas A.*	Political Science
		Beall, James	Psychology
		Braddy, Larry	Psychology
		Vogel, Harry L.	Sociology

\*Faculty teaching at more than one EGSC location

†Faculty teaching dual enrollment courses at a high school

**David Chevalier, Associate Vice President for Academic Affairs**

**Courtney Joiner, Augusta/Statesboro Academic Coordinator**

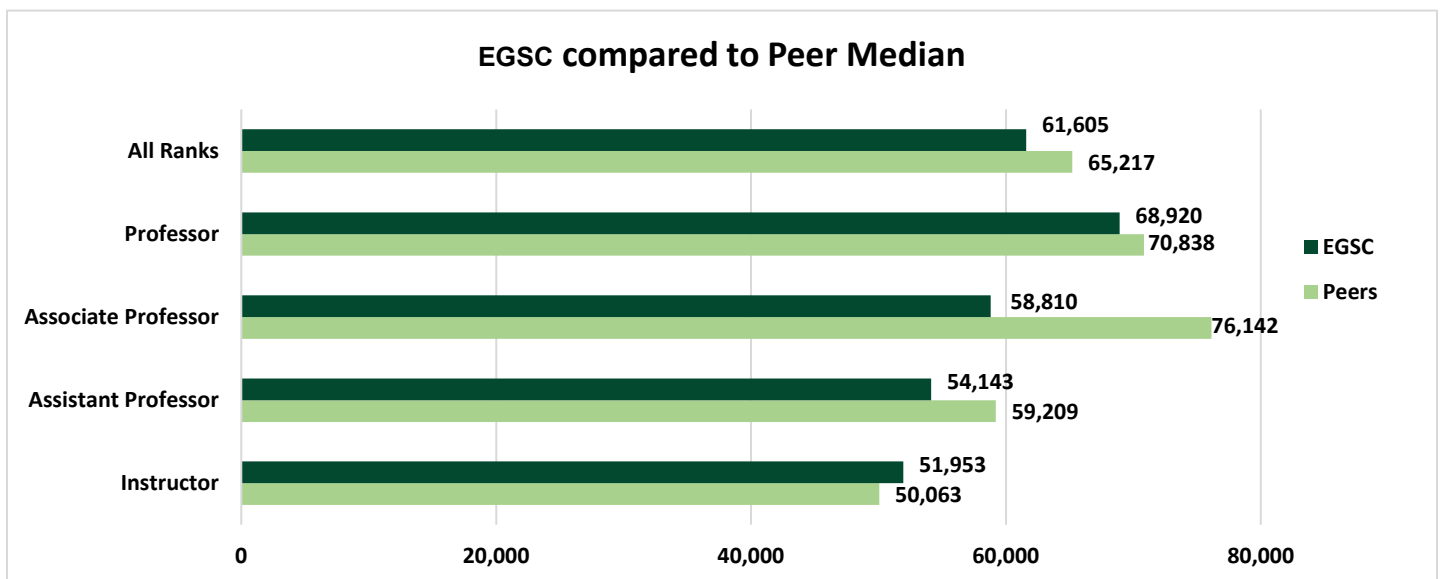
Source: EGSC Office of Strategic Planning and Institutional Research

**Faculty Rank by Ethnicity and Gender Fall 2023**

Full-Time Faculty Fall Semester 2023		Professor		Associate Professor		Assistant Professor		Instructors		Total					
		No.	%	No.	%	No.	%	No.	%	No.	%				
Nonresident Alien	Men	0	0.0%	1	2.7%	0	0.0%	0	0.0%	1	2.7%				
	Women	0	0.0%	0	0.0%	0	0.0%	0	0.0%	0	0.0%				
Asian	Men													0	0.0%
	Women	1	2.7%	0	0.0%									1	2.7%
Black	Men	0	0.0%	2	5.4%							0	0.0%	2	5.4%
	Women	0	0.0%	0	0.0%							0	0.0%	0	0.0%
Hispanic	Men	0	0.0%	1	2.7%							0	0.0%	1	2.7%
	Women	1	2.7%	0	0.0%							0	0.0%	1	2.7%
White	Men	9	24.3%	7	18.9%					1	2.7%	0	0.0%	17	45.9%
	Women	7	18.9%	7	18.9%					0	0.0%	0	0.0%	14	37.8%
Multiracial	Men	0	0.0%	0	0.0%					0	0.0%	0	0.0%	0	0.0%
	Women									0	0.0%				
<b>Total</b>	<b>Men</b>	<b>9</b>	<b>24.3%</b>	<b>11</b>	<b>29.7%</b>	<b>1</b>	<b>2.7%</b>	<b>0</b>	<b>0.0%</b>	<b>21</b>	<b>56.8%</b>				
	<b>Women</b>	<b>9</b>	<b>24.3%</b>	<b>7</b>	<b>18.9%</b>	<b>0</b>	<b>0.0%</b>	<b>0</b>	<b>0.0%</b>	<b>16</b>	<b>43.2%</b>				
	<b>Total</b>	<b>18</b>	<b>48.6%</b>	<b>18</b>	<b>48.6%</b>	<b>1</b>	<b>2.7%</b>	<b>0</b>	<b>0.0%</b>	<b>37</b>	<b>100.0%</b>				

**EGSC Full-Time Faculty Salaries Compared to IPEDS Peers AY 2023**

Faculty Salaries	EGSC	Peers	% of Peers
All Ranks	61,605	65,217	94.5%
Professor	68,920	70,838	97.3%
Associate Professor	58,810	76,142	77.2%
Assistant Professor	54,143	59,209	91.4%
Instructor	51,953	50,063	103.8%



Source: IPEDS (Integrated Postsecondary Education Data System)

College Full-Time Employees by Occupational Classification, Gender and Ethnicity: Fall Semester 2023

Employees by Occupational Category	White	Black	Hispanic	Asian	Multiracial	Unknown Ethnicity	Nonresident Alien	Total
<b>Men</b>	<b>46</b>	<b>8</b>	<b>3</b>	<b>0</b>	<b>1</b>	<b>1</b>	<b>1</b>	<b>60</b>
Instructional Staff	19	3	1				1	24
Student and Academic Affairs and Other Education Services Occupations	1		1					2
Management	9	3			1			13
Computer, Engineering, and Science	2							2
Community, Social Service, Legal, Arts, Design, Entertainment, Sports and Media	2	1						3
Service Occupations	6					1		7
Office and Administrative Support	3	1						4
Natural Resources, Construction, and Maintenance	4		1					5
<b>Women</b>	<b>60</b>	<b>20</b>	<b>5</b>	<b>2</b>	<b>0</b>	<b>0</b>	<b>0</b>	<b>87</b>
Instructional Staff	19	1	2	1				23
Librarians and Media Collection Specialists	2		1					3
Student and Academic Affairs and Other Education Services Occupations	4	3						7
Management	17	5						22
Business and Financial Operations	2	1						3
Computer, Engineering, and Science								0
Community, Social Service, Legal, Arts, Design, Entertainment, Sports and Media	1	1						2
Service Occupations	6	6	1					13
Office and Administrative Support	9	3	1	1				14
<b>Total</b>	<b>106</b>	<b>28</b>	<b>8</b>	<b>2</b>	<b>1</b>	<b>1</b>	<b>1</b>	<b>147</b>

Source: IPEDS (Integrated Postsecondary Education Data System)

# FINANCIAL INFORMATION

**Revenue by Source: Fiscal Years 2018 through 2022**

<b>EGSC Revenue Category</b>	<b>FY 2017-18</b>	<b>FY 2018-19</b>	<b>FY 2019-20</b>	<b>FY 2020-21</b>	<b>FY 2021-22</b>
Tuition and fees after deducting discounts and allowances	4,096,626	3,981,928	3,325,502	3,087,228	3,236,408
Federal operating grants and contracts	90,755	56,238	72,374	6,679	0
State operating grants and contracts	221,735	199,676	119,206	159,779	90,086
Local/private operating grants and contracts	5,250	19,337	3,000	2,350	848
Sales and services of auxiliary enterprises	2,714,785	2,807,410	2,411,730	1,999,320	1,727,948
Other sources - operating	97,091	203,118	333,762	392,894	490,636
<b>Total operating revenues</b>	<b>7,226,242</b>	<b>7,267,707</b>	<b>6,265,574</b>	<b>5,648,250</b>	<b>5,545,926</b>
State appropriations	9,237,733	9,984,666	10,123,680	9,827,576	9,910,490
Federal nonoperating grants	8,323,618	8,515,520	10,295,620	9,567,889	14,489,659
State nonoperating grants	53,017	76,518	95,651	67,968	64,091
Gifts including contributions from affiliated organizations	872,343	741,321	945,909	320,024	617,702
Investment income	11,972	31,014	26,502	24,014	-38,828
Other nonoperating revenues				539	0
<b>Total nonoperating revenues</b>	<b>18,498,683</b>	<b>19,349,039</b>	<b>21,487,362</b>	<b>19,808,010</b>	<b>25,043,114</b>
<b>Total operating and nonoperating revenues</b>	<b>25,724,925</b>	<b>26,616,746</b>	<b>27,752,936</b>	<b>25,456,260</b>	<b>30,589,040</b>
Capital grants and gifts	808,696	1,115,265	3,352,982	1,108,829	3,084,484
<b>Total revenues and other additions</b>	<b>26,533,621</b>	<b>27,732,011</b>	<b>31,105,918</b>	<b>26,565,089</b>	<b>33,673,524</b>
<b>Percent by Line Item of Total Revenues and Other Additions</b>	<b>FY 2017-18</b>	<b>FY 2018-19</b>	<b>FY 2019-20</b>	<b>FY 2020-21</b>	<b>FY 2021-22</b>
Tuition and fees after deducting discounts and allowances	15.4%	14.4%	10.7%	11.6%	9.6%
Federal operating grants and contracts	0.3%	0.2%	0.2%	0.0%	0.0%
State operating grants and contracts	0.8%	0.7%	0.4%	0.6%	0.3%
Local/private operating grants and contracts	0.0%	0.1%	0.0%	0.0%	0.0%
Sales and services of auxiliary enterprises	10.2%	10.1%	7.8%	7.5%	5.1%
Other sources - operating	0.4%	0.7%	1.1%	1.5%	1.5%
<b>Total operating revenues</b>	<b>27.2%</b>	<b>26.2%</b>	<b>20.1%</b>	<b>21.3%</b>	<b>16.5%</b>
State appropriations	34.8%	36.0%	32.5%	37.0%	29.4%
Federal nonoperating grants	31.4%	30.7%	33.1%	36.0%	43.0%
State nonoperating grants	0.2%	0.3%	0.3%	0.3%	0.2%
Gifts including contributions from affiliated organizations	3.3%	2.7%	3.0%	1.2%	1.8%
Investment income	0.0%	0.1%	0.1%	0.1%	-0.1%
Other nonoperating revenues				0.0%	0.0%
<b>Total nonoperating revenues</b>	<b>69.7%</b>	<b>69.8%</b>	<b>69.1%</b>	<b>74.6%</b>	<b>74.4%</b>
<b>Total operating and nonoperating revenues</b>	<b>97.0%</b>	<b>96.0%</b>	<b>89.2%</b>	<b>95.8%</b>	<b>90.8%</b>
Capital grants and gifts	3.0%	4.0%	10.8%	4.2%	9.2%
<b>Total revenues and other additions</b>	<b>100.0%</b>	<b>100.0%</b>	<b>100.0%</b>	<b>100.0%</b>	<b>100.0%</b>

Source: IPEDS (Integrated Postsecondary Education Data System)



**Expenditures by Function: Fiscal Years 2017 through 2022**

<b>EGSC Expense Category</b>	<b>FY 2015-16</b>	<b>FY 2017-18</b>	<b>FY 2018-19</b>	<b>FY 2019-20</b>	<b>FY 2020-21</b>	<b>FY 2021-22</b>
Instruction	8,636,134	10,395,773	10,033,552	10,333,306	9,299,589	8,606,289
Public Service	-	-	-	9,959	9,400	6,716
Academic support	2,476,364	2,927,461	2,674,731	3,233,104	3,188,937	4,834,622
Student services	2,424,760	2,372,957	2,200,818	2,200,481	2,102,653	2,265,823
Institutional support	3,311,666	3,774,566	3,835,436	5,012,482	3,953,910	3,764,096
Scholarships and fellowships expenses	4,918,265	4,365,503	4,516,609	5,346,384	5,271,597	9,183,525
Auxiliary enterprises	2,362,906	2,293,682	2,413,267	2,068,558	2,084,393	1,819,958
Other Functional Expenses and deductions	-	-	1,012,077	1,489,057	1,504,912	3,844,222
<b>Total expenses and deductions</b>	<b>24,130,095</b>	<b>26,129,942</b>	<b>26,686,490</b>	<b>29,693,331</b>	<b>27,415,391</b>	<b>34,325,251</b>
<b>Percent by Line Item of Total Expenses and Deductions</b>	<b>FY 2015-16</b>	<b>FY 2017-18</b>	<b>FY 2018-19</b>	<b>FY 2019-20</b>	<b>FY 2020-21</b>	<b>FY 2021-22</b>
Instruction	35.8%	39.8%	37.6%	34.8%	33.9%	25.1%
Academic support	10.3%	11.2%	10.0%	10.9%	11.6%	14.1%
Student services	10.0%	9.1%	8.2%	7.4%	7.7%	6.6%
Institutional support	13.7%	14.4%	14.4%	16.9%	14.4%	11.0%
Scholarships and fellowships expenses	20.4%	16.7%	16.9%	18.0%	19.2%	26.8%
Auxiliary enterprises	9.8%	8.8%	9.0%	7.0%	7.6%	5.3%
Other Functional Expenses and deductions	-	-	3.8%	5.0%	5.5%	11.2%
<b>Total expenses and deductions</b>	<b>100.0%</b>	<b>100.0%</b>	<b>100.0%</b>	<b>100.0%</b>	<b>100.0%</b>	<b>100.0%</b>

Source: IPEDS (Integrated Postsecondary Education Data System)

**East Georgia State College Foundation Fundraising Fiscal Years 1999 through 2023**

<b>FY YEAR</b>	<b>TOTAL CONTRIBUTIONS</b>	<b>TOTAL SUPPORT AND REVENUE</b>
1999	54,996	55,996
2000	78,784	83,109
2001	95,270	128,007
2002	93,775	81,647
2003	186,057	211,939
2004	216,682	248,861
2005	300,648	268,550
2006	178,285	221,509
2007	240,945	361,744
2008	252,896	192,454
2009	127,077	178,484
2010	234,782	270,205
2011	152,147	174,646
2012	233,908	272,130
2013	245,723	317,148
2014	247,087	363,075
2015	1,255,543	1,292,216
2016	210,392	234,614
2017	766,721	879,720
2018	789,116	880,994
2019	32,173	356,297
2020	116,933	319,316
2021	21,865	627,366
2022	45,867	6,309
2023	12,745	277,771

Source: Annual audited financial statements, East Georgia State College Foundation

# PHYSICAL FACILITIES

**College Buildings by Major Use, Swainsboro Campus: Spring 2024**

Major Use	No.	Description
Administration	5	GL Smith, LFG, Student Services, Police Department, Plant Operations
Academic	1	Academic Building
Physical Education/Athletics	1	GYM/PE Building
Public Service	1	Fulford Center
Residential	3	Bobcat Villas South, West; Strange Clubhouse

**Number of Rooms by Basic Room Type, Swainsboro Campus: Spring 2024**

Basic Room Type	No.
Classrooms	20
Discipline Teaching Laboratories	9
Computer Classroom	4
Offices	158

**Space Assignment by Room Use and Building Location: Spring 2024**

Space Assignment by Room Use	Sq. Feet
Classroom	15,053
Discipline Teaching Laboratories	8,712
Computer Classrooms	3,421
Offices	27,052
Library	10,615
Study	8,168
General Use	29,815
Support Services	11,954
Support Facilities	7,318
Residential	90,557
Non-assignable	114,920
Healthcare	698
Special Use Facilities	21,444
<b>Total Square Feet</b>	<b>349,727</b>

**East Georgia State College Land Holdings\***

Swainsboro - 249.62 Acres

\*Does not include EGSC Foundation Property

Source: EGSC Office of the Director of Operation